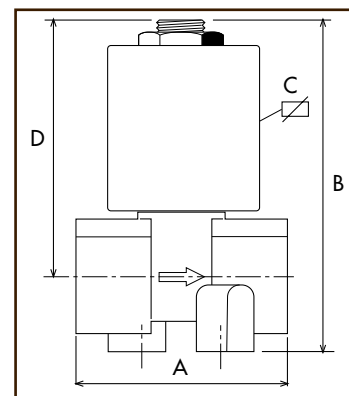


Caractéristiques

ATTACCHI PIPES in → out	Ø mm	CODICE CODE	KV m ³ /h	M.O.P.D. bar		DIMENSIONI/DIMENSIONS mm				PESO/WEIGHT Kg
				AC	DC	A	C	D		
1/2"-1/4" M-M	4,0	6601	0.250	6	4	72.5	61	47	52	0.260
1/4" NPT	4,0	6604	0.260	6	4	35	62.5	47	50	0.225
1/4" NPT	3,2	*6605	0.220	8	5	35	63	47	50	0.220
3/8" NPT	4,0	*6606	0.390	6	4	40	70	47	57	0.310
1/2" NPT	4,0	*6607	0.390	6	4	46	70	47	57	0.300
1/8"	3,0	*6609	0.170	9	5	35	63	47	50	0.220
1/4"	2,0	*6610	0.085	25	12	35	63	47	50	0.220
1/4"	3,0	*6610	0.170	9	5	35	63	47	50	0.220
1/4"	4,0	*6610	0.250	6	4	35	63	47	50	0.220
1/8"	2,0	6611	0.085	25	12	35	63	47	50	0.220
1/8"	3,0	6611	0.170	9	5	35	63	47	50	0.220
1/4"	2,0	6612	0,085	25	12	35	63	47	50	0,220
1/4"	3,0	6612	0.170	9	5	35	63	47	50	0.220
3/8"	4,0	*6613	0.390	6	4	40	70	47	57	0.310
1/2"	4,0	*6614	0.390	6	4	46	70	47	57	0.300
R 1/8"-P.G.	2,0	6622	0.085	25	12	55	58	47	50	0.240
1/4"-P.G.	2,2	6625	0.115	23	11	46	59	47	50	0.230
R 1/8"-P.G.	2,0	6628	0.085	25	12	44	58	47	50	0.190
1/4"-P.G.	2,0	6630	0.085	25	12	34	58	47	50	0.190
1/4"	3,0	6660	0.170	9	5	57	73.5	47	55	0.265



P.G.=PORTAGOMMA Ø 5.4 - HOSEBIB Ø 5.4 - SCHLAUCHNIPPEL Ø 5.4

* UNICHE VERSIONI CON FORI DI FISSAGGIO - ONLY THESE EXECUTIONS AVAILABLE WITH FIXING HOLES
NUR DIESE AUSFUEHRUNGEN ERHAELTLICH MIT BEFESTIGUNGSFUESSE

Caractéristiques électroniques

		POTENZA/POWER	
		NOMINALE HOLDING	SPUNTO IN RUSH
V~	12 24 48 110 230 400	50 60 Hz	17VA 24VA
V=	12 24 48 110		16W

Per dettagli costruttivi sulle bobine vedi capitolo "INFORMAZIONI DI PROGETTO"
For construction details of the coils see chapter "PROJECT INFORMATION"
Ausführliche Daten über die Ventilsolen finden Sie unter Abschnitt "TECHNISCHE INFORMATIONEN"

Température maximum

FLUIDI/FLUIDS			AMBIENTE/AMBIENT
NBR	EPDM	FPM	80°C
90°C	150°C	150°C	

Disponibili bobine per temp. ambienti fino a 120°C
Coils available for ambient temperatures up to 120°C
Spulen verfügbar für Umgebungstemperaturen bis zu 120°C



I

CARATTERISTICHE GENERALI**PRESSIONE MINIMA DI FUNZIONAMENTO** 0 bar**PARTI A CONTATTO CON IL FLUIDO**

TENUTA EPDM - NBR - FPM
CORPO OTTONE
ORGANI INTERNI ACCIAIO INOX
FLUIDI ACQUA - ARIA - VAPORE - GAS - GASOLIO - NAFTA

**VALVOLA UNIDIREZIONALE
VALVOLA NON ISPEZIONABILE****POSIZIONE DI MONTAGGIO****TEMPERATURA AMBIENTE** Qualsiasi; sconsigliata quella con bobina rivolta verso il basso
80°C, in D.C. per temperature superiori a 40°C, le performance (M.O.P.D.) potrebbero diminuire**ESECUZIONI SPECIALI**

- VALVOLA OMOLOGATA CE GAS (CEE 90/396) PER GAS INFIAMMABILI (CE-0085AS0422)
 - ESECUZIONE ANTIRUMORE (PER CORRENTE CONTINUA)
 - ESECUZIONE PER FLUIDI AD ALTA VISCOSITA'
 - ESECUZIONE ISPEZIONABILE (6610)
 - FORO BY-PASS PER SALDATRICI
 - MODELLI DISPONIBILI IN VERSIONE SPECIALE PER INCREMENTO DELLE PRESTAZIONI MOPD
CONNETTORE TRIPOLARE UNI ISO 4400 (DIN 43650A) - IP65
MANOPOLA (6660)
RACCORDO 1/4" M- PORTAGOMMA (6660)

ACCESSORI

UK

GENERAL FEATURES**MINIMUM WORKING PRESSURE** 0 bar**PARTS IN CONTACT WITH THE FLUID**

SEALING EPDM - NBR - FPM
BODY BRASS
INTERNAL PARTS STAINLESS STEEL
FLUIDS WATER - AIR - STEAM - GAS - DIESEL OIL - NAFTA

ONE WAY DIRECTION VALVE**NON-SERVICEABLE VALVE****MOUNTING POSITION****AMBIENT TEMPERATURE** Any, the position with the coil downwards is not recommended.
80°C, in D.C. for temperatures higher than 40°C, the performances (M.O.P.D.) could decrease.**SPECIAL EXECUTIONS**

- VALVE CERTIFIED CE GAS(CEE 90/396) for INFLAMMABLE GAS (CE-0085AS0422)
 - NOISE DECREASING EXECUTION (for CONTINUOUS CURRENT)
 - EXECUTION FOR HIGH DENSITY FLUIDS
 - INSPECTIONABLE EXECUTION (6610)
 - BY-PASS HOLE for WELDING MACHINES
 - MODELS AVAILABLE IN SPECIAL EXECUTION TO INCREASE THE PERFORMANCE MOPD
THREE POLE PLUG CONNECTOR UNI ISO 4400 (DIN 43650A)-IP65
KNOB (6660)
CONNECTION 1/4" M-HOSE BIB (6660)

ACCESSORIES

D

ALLGEMEINE MERKMALE**MINIMALER ARBEITSDRUCK** 0 bar**MEDIUMS BERUEHRTE TEILE**

DICHTUNG EPDM - NBR - FPM
KOERPER MESSING
INNERE ELEMENTE EDELSTAHL
MEDIUM WASSER - LUFT - DAMPF - GAS - DIESEL OEL - NAFTA

UNIDIREKTIONALES VENTIL**VENTIL WARTUNGSFREI****MONTAGEPOSITION**

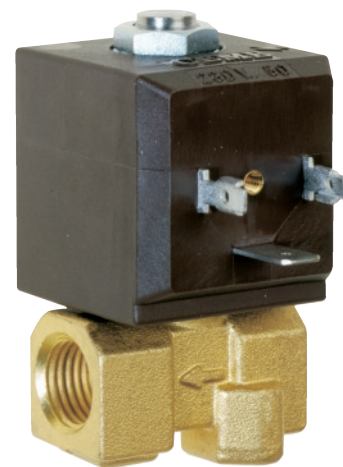
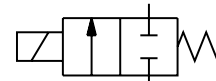
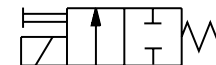
Keine Einschränkungen. Für Montage mit dem Spulenkopf senkrecht nach unten, auf Anfrage.

UMGEBUNGSTEMPERATUR

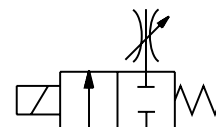
80°C, im D.C.- Betrieb koennen Temperaturen ueber 40°C, die Schaltkraefte (M.O.P.D.) des Ventils beeintraechtigen

SONDERAUSFUEHRUNGEN

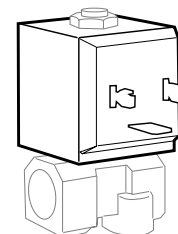
- VENTIL ZERTIFIZIERT NACH GASRICHTLINIE CE GAS (CEE 90/396) FUER ENTZUENDBARE GAASE (CE-0085AS0422)
 - GERAEUSCHGEDAEMPFTES VERSION (fuer GLEICHSTROM)
 - AUSFUEHRUNG FUER MEDIEN MIT HOHER VISCOSITAET
 - AUSFUEHRUNG ZERLEGBAR (6610)
 - BYPASSBOHRUNG fuer SCHWEISSGERAETE
 - MODELLE ERHAELTICH IN SONDERAUSFUEHRUNGEN UM DIE MOPD LEISTUNG ZU ERHOEHEN
DREIPOLIGER STECKER UNI ISO 4400 (DIN 43650A)-IP65 - DREHKNOPF (6660) - ANSCHLUSS 1/4" M-SCHLAUCHNIPPEL (6660)

ZUBEHOER**STANDARD****6601**

COMANDO MANUALE
MANUAL OVERRIDE
MANUELLE BETÄTIGUNG

6660

REGOLAZIONE DI PORTATA MANUALE
MANUAL FLOW RATE REGULATOR
MIT INTEGRIERTER MANUELLER DURCHFLUSSREGULIERUNG



BOBINA TIPO B6
COIL TYPE B6
SPULE TYP B6

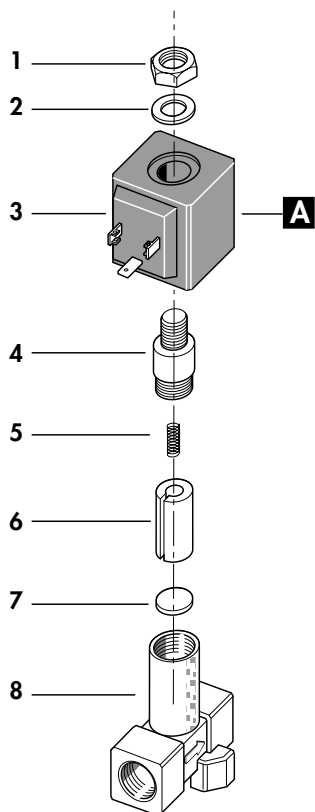
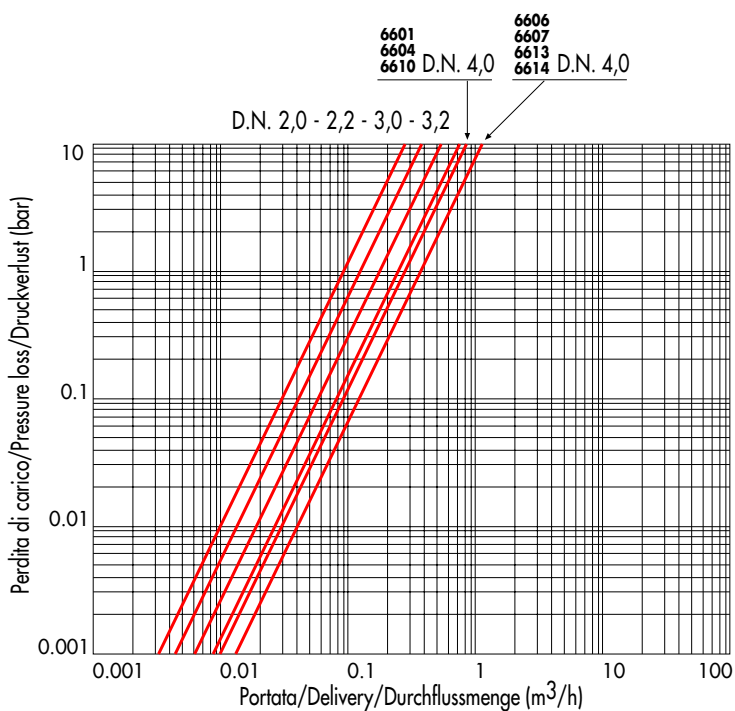


Diagramme de Perte de charge



VALVOLA FORNITA CON



QUESTA SERIE DI VALVOLE E' IDONEA ALL'INTERCETTAZIONE DI GAS INFIAMMABILE, OLTRE A TUTTI GLI ALTRI FLUIDI DESCRITTI NELLE CARATTERISTICHE GENERALI PAG.27. ALCUNI MODELLI SONO STATI SOTTOPOSTI ALL'ESAME DI TIPO RICHIESTO DALLA DIRETTIVA EUROPEA CEE 90/396 (APPARECCHI A GAS E SUOI COMPONENTI) (6609-6610-6611-6612)

VALVE SUPPLIED WITH:



BESIDES ALL OTHER KIND OF MEDIUMS POINTED OUT IN THE GENERAL FEATURES OF PAGE NO. 27, THIS SERIES OF VALVES ARE SUITABLE FOR INTERCEPTION OF INFLAMMABLE GAS, CERTAIN MODELS HAVE BEEN SUBMITTED FOR THE TESTING REQUIRED FROM THE EEC DIRECTIVE CEE 90/ 396 (GAS APPARATUS AND THEIR COMPONENTS) (6609-6610-6611-6612)

LIEFERUMFANG:



AUSSER DEN BEREITS AUF SEITE 27 IN DEN ALLGEMEINE MERKMALEN ANGEGBEN MEDIEN, WURDEN DIESE VENTILSERIEN SPEZIELL FUER DIE VERWENDUNG MIT ENTZUENDBAREN GASEN GEPRUEFT.EIN GROSSTEIL DER BAUSERIEN WURDE GEMAESS EUROPAEISCHER GAS RICHTLINIE CEE 90/396 GEPRUEFT UND UNTERLIEGEN SOMIT EINER 100% TIGER DICHTIGKEITSPRUEFUNG. IM SPEZIELLEN DIE TYPEN (6609-6610-6611-6612)

1	Dado	Lock nut	Mutter
2	Rondella	Washer	Beilagscheibe
3	Bobina	Coil	Magnetspule
4	Nucleo fisso	Tube top	Kern
5	Molla	Spring	Feder
6	Nucleo mobile	Plunger	Plunger
7	Pastiglia	Seal	Dichtung
8	Corpo	Valve body base	Grundkörper
RICAMBI		SPARE PARTS	ERSATZTEILE
A	Bobina	Coil	Magnetspule

