

## INFORMATIONS GÉNÉRALES GENERAL INFORMATION

- Électrodistributeurs 3/2 - 5/2 - 5/3 avec raccord G1/8" - G1/4" - G3/8" - G1/2"  
3/2 - 5/2 - 5/3 spool valves with G1/8" - G1/4" G3/8" - G1/2" threaded ports
- Montage en ligne sur embases monobloc ou associables (Voir embases p.136 à 141)  
Installation in-line, on gang or modular manifolds
- Commande électrique à action manuelle bistable  
Solenoid pilots with detented manual override as standard
- Version basse puissance 1.5W sur demande  
On request with low consumption 1.5W
- Versions spéciales sur demande  
Special versions on request

### Temps de réponse - Response times

	G1/8"	G1/4"	G1/2"
Monostable <i>Monostable</i>	TRA (14) : 15 ms TRR (12) : 35 ms	TRA (14) : 19 ms TRR (12) : 45 ms	TRA (14) : 13 ms TRR (12) : 26 ms
Bistable <i>Bistable</i>	TRA (14) : 20ms TRR (12) : 20ms	TRA (14) : 22 ms TRR (12) : 22ms	TRA (14) : 24ms TRR (12) : 24ms

### Matériaux

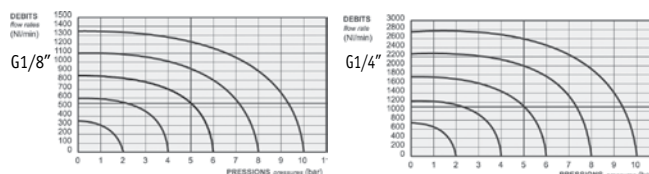
Corps : Aluminium anodisé  
Ressorts : Inox  
Joint : NBR  
Tiroir : Aluminium nickelé  
Parties internes : Laiton OT58

### Materials

Body : Aluminium 11S  
Springs : Stainless steel  
Seals : NBR  
Spool : Nickel plated aluminium  
Internal parts : Brass OT58

### Débit nominal à 6 bar

G1/8" : 850 NL/min      G1/4" : 1700 NL/min  
G3/8" : 2250 NL/min      G1/2" : 3000 NL/min



Les produits suivants sont vendus sans bobine ; elles sont vendues séparément (voir chapitre 5).

The following listed products are sold without coils, which are bought separately (refer to chapter 5).

Diamètre nominal <i>Nominal orifice</i>	G1/8" : 5 mm - G 1/4" : 7.5 mm G3/8" : 10mm - G1/2" : 13mm		
Echelle de température <i>Temperature range</i>	max +60°C		
Pression de travail <i>Working pressure</i>	al. interne monost. <i>[monost. internal air supply]</i>	al. interne bist. <i>[bistable internal air supply]</i>	alim. séparée <i>[separate air supply]</i>
	2.5 ... 10 bar 0.25 ... 1 MPa	1 ... 10 bar 0.1 ... 1 MPa	max 10 bar max 1 MPa
Pression exercée (avec alimentation séparée) <i>Actuating pressure (for separate air supply)</i>	monostable <i>[monostable]</i>		bistable <i>[bistable]</i>
	2.5 ... 10 bar 0.25 ... 1 MPa		1 ... 10 bar 0.1 ... 1 MPa
Fluide <i>Fluid</i>	air filtré 50µ avec ou sans lubrification 50µ filtered lubricated or non lubricated air		

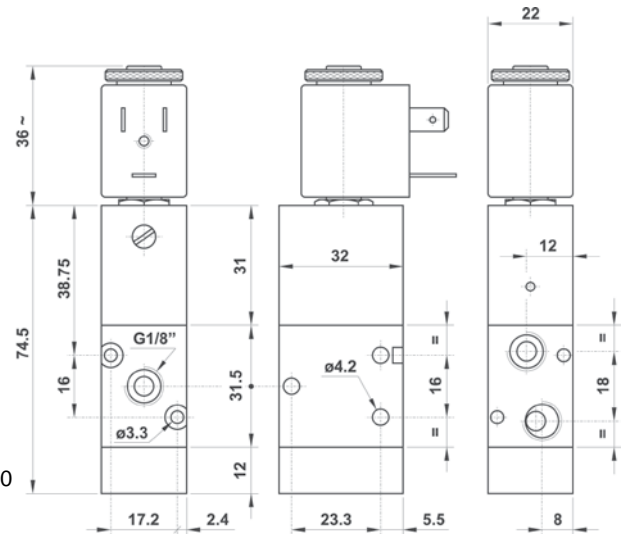
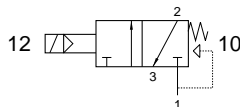
# GAMME STANDARD

## Électro distributeurs G1/8" | Solenoid actuated valves

### 321 ME

Électro distributeur 3/2 NF monostable  
rappel ressort pneumatique  
raccordement G1/8"  
*3/2 NC solenoid pilot - spring return  
G1/8"*

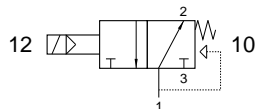
Version Atex 2GD T6 : 321ME.ATEX



### 321 MEA

Électro distributeur 3/2 NO monostable  
rappel ressort pneumatique  
raccordement G1/8"  
*3/2 NO solenoid pilot - spring return  
G1/8"*

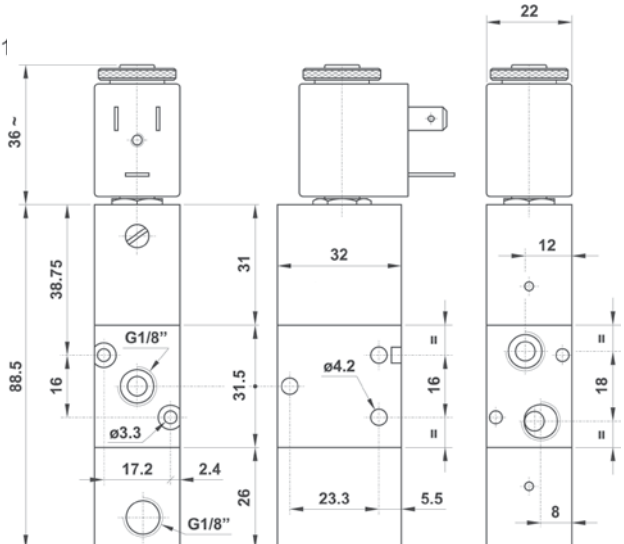
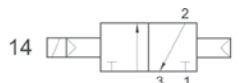
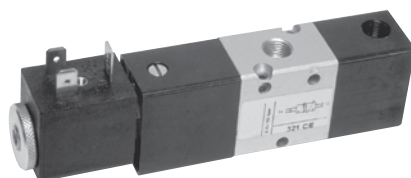
Version Atex 2GD T6 : 321MEA.ATEX



### 321 CE

Électro distributeur 3/2 bistable  
commande électrique  
retour par commande pneumatique  
raccordement G1/8"  
*3/2 solenoid pilot  
separate pneumatically piloted return  
G1/8"*

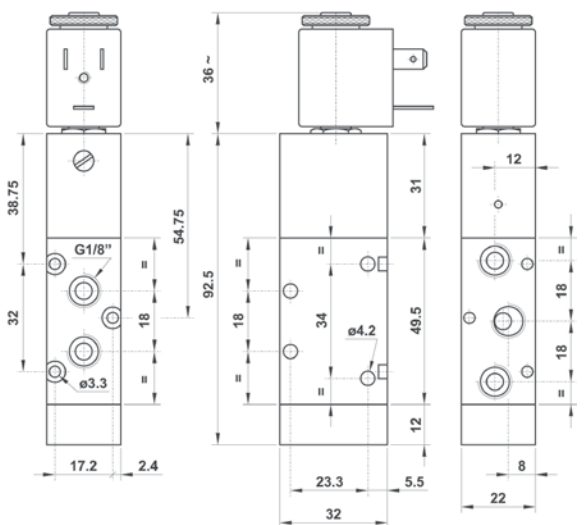
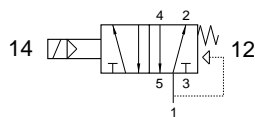
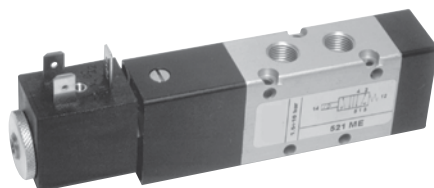
Version Atex 2GD T6 : 321CE.ATEX



### 521 ME

Électro distributeur 5/2 monostable  
rappel ressort pneumatique  
raccordement G1/8"  
*5/2 solenoid pilot - spring return  
G1/8"*

Version Atex 2GD T6 : 521ME.ATEX



# GAMME STANDARD

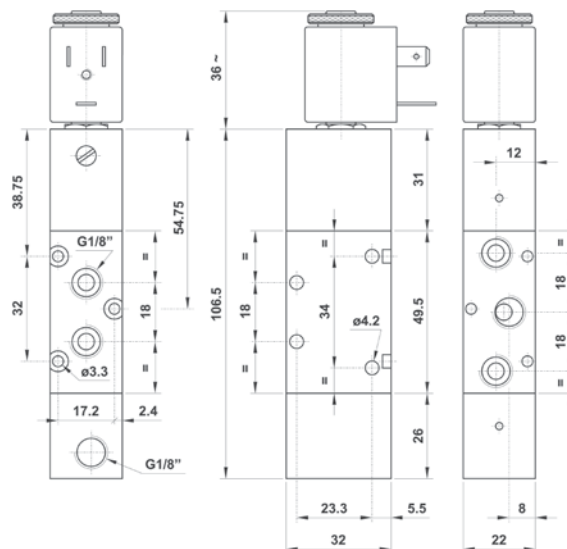
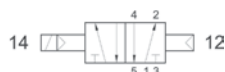
## Électrodistribeurs G1/8" |

Solenoid actuated valves

### 521 CE

Électrodistribeur 5/2 bistable  
commande électrique  
retour par commande pneumatique  
raccordement G1/8"  
*5/2 solenoid pilot  
separate pneumatically piloted return  
G1/8"*

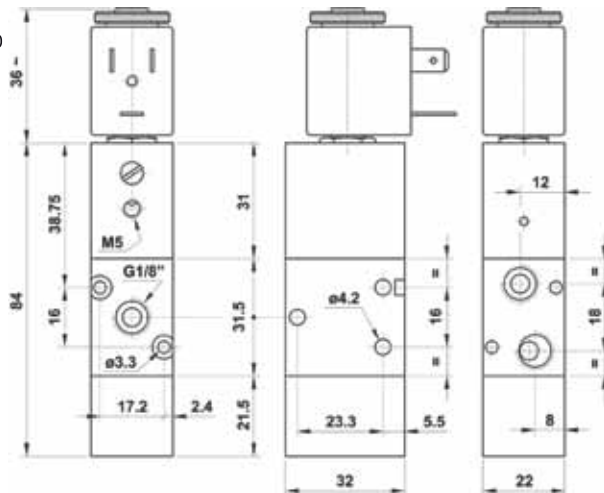
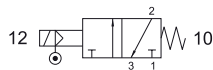
Version Atex 2GD T6 : 521CE.ATEX



### 321 ME AS

Électrodistribeur 3/2 NF monostable  
à assistance pneumatique externe  
rappel ressort mécanique  
raccordement G1/8"  
*3/2 solenoid pilot with separate air supply  
spring return  
G1/8"*

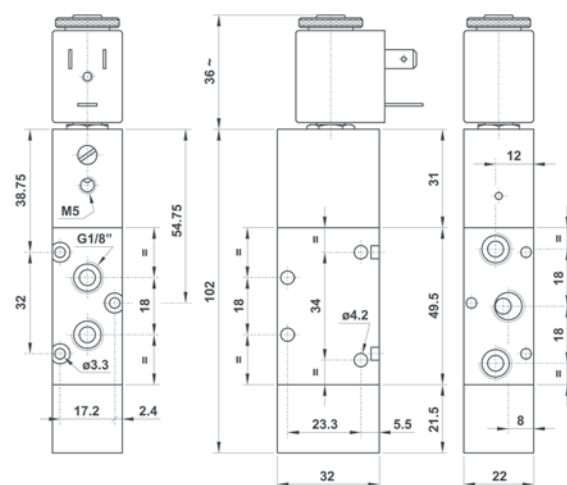
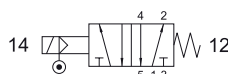
Version Atex 2GD T6 : 321MEAS.ATEX



### 521 ME AS

Électrodistribeur 5/2 monostable  
à assistance pneumatique externe  
rappel ressort mécanique  
raccordement G1/8"  
*5/2 solenoid pilot with separate air supply  
spring return  
G1/8"*

Version Atex 2GD T6 : 521MEAS.ATEX



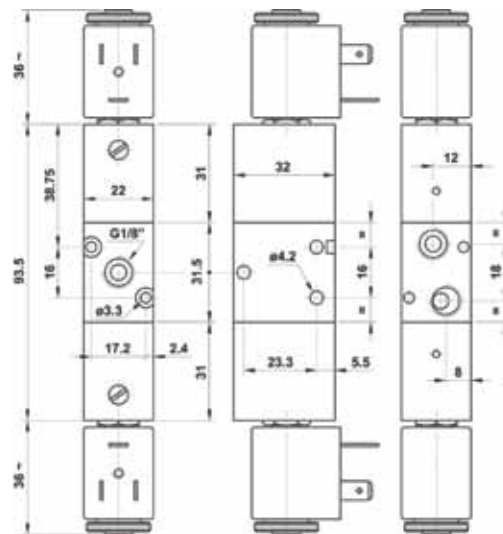
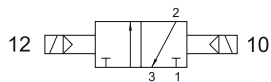
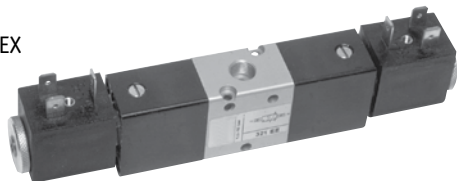
# GAMME STANDARD

## Électro distributeurs G1/8" | Solenoid actuated valves

### 321 EE

Électro distributeur 3/2 bistable  
raccordement G1/8"  
3/2 double solenoid pilot  
G1/8"

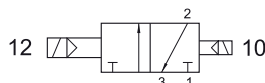
Version Atex 2GD T6 : 321EE.ATEX



### 321 EED

Électro distributeur 3/2 bistable différentiel  
raccordement G1/8"  
3/2 double solenoid pilot  
with differential  
G1/8"

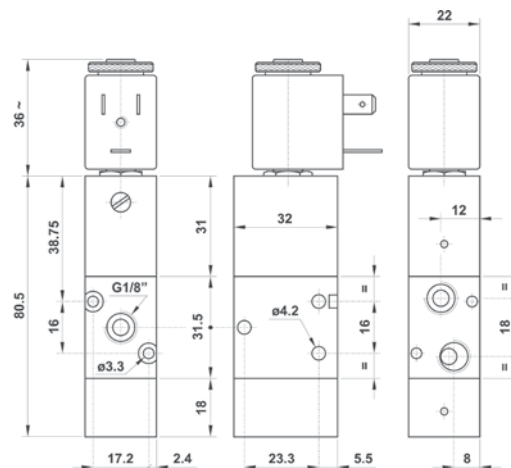
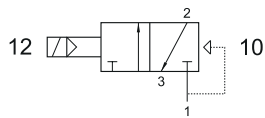
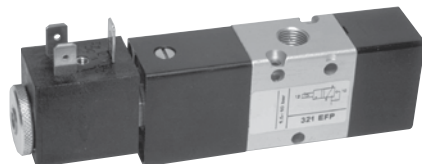
Version Atex 2GD T6 : 321EED.ATEX



### 321 EFP

Électro distributeur 3/2 NF monostable  
rappel ressort pneumatique  
raccordement G1/8"  
3/2 NC solenoid pilot  
pneumatic spring return  
G1/8"

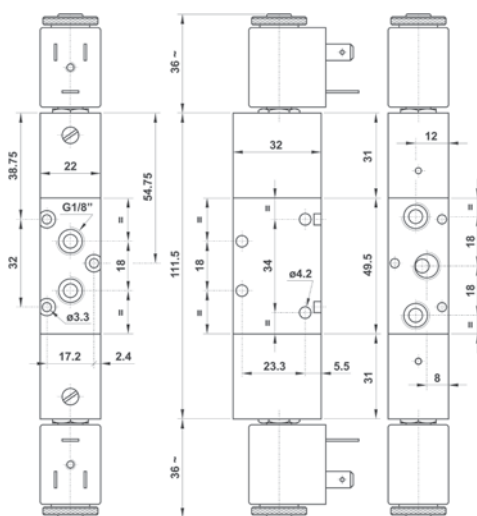
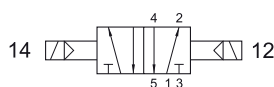
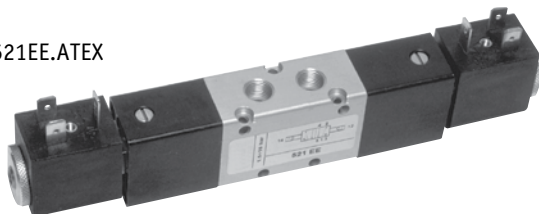
Version Atex 2GD T6 : 321EFP.ATEX



### 521 EE

Électro distributeur 5/2 bistable  
raccordement G1/8"  
5/2 double solenoid pilot  
G1/8"

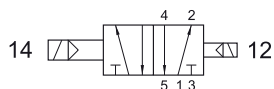
Version Atex 2GD T6 : 521EE.ATEX



### 521 EED

Électro distributeur 5/2 bistable différentiel  
raccordement G1/8"  
5/2 double solenoid pilot  
with differential  
G1/8"

Version Atex 2GD T6 : 521EED.ATEX



# GAMME STANDARD

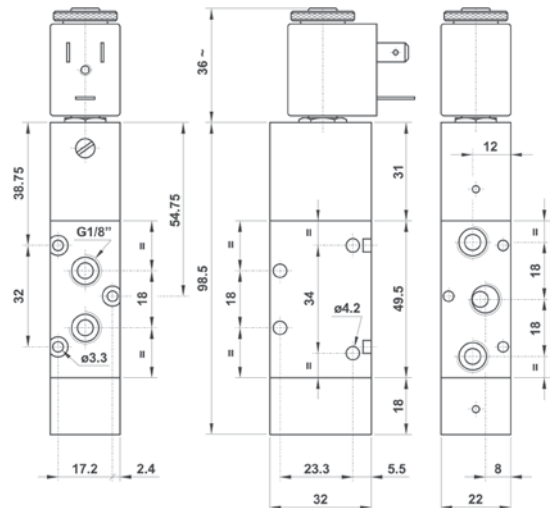
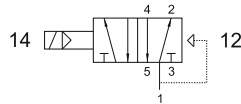
## Électrodistribeurs G1/8" |

Solenoid actuated valves

### 521 EFP

Électrodistribeur 5/2 monostable  
rappel ressort pneumatique  
raccordement G1/8"  
5/2 solenoid pilot  
pneumatic spring return  
G1/8"

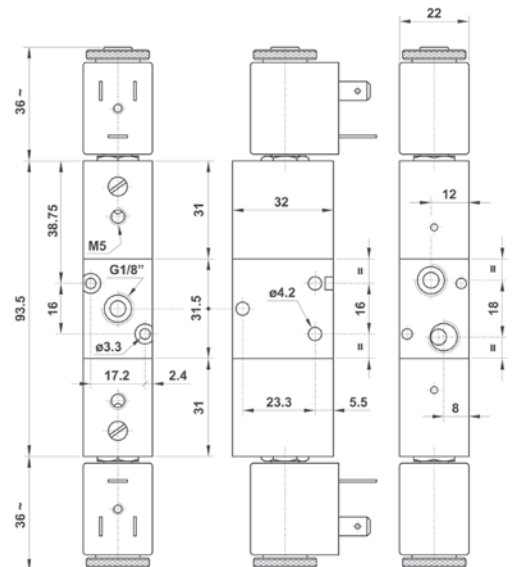
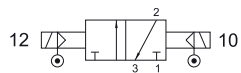
Version Atex 2GD T6 : 521EFP.ATEX



### 321 EE AS

Électrodistribeur 3/2 bistable  
assistance pneumatique externe  
raccordement G1/8"  
3/2 double solenoid pilot  
with separate air supply  
G1/8"

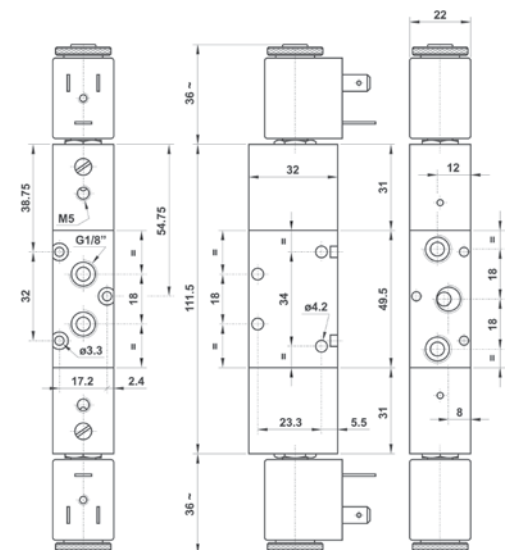
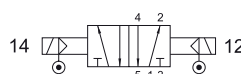
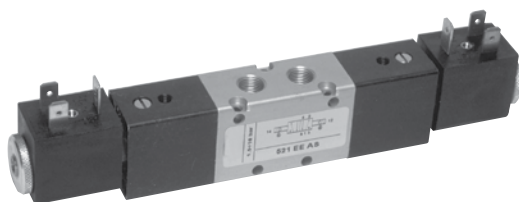
Version Atex 2GD T6 : 321EEAS.ATEX



### 521 EE AS

Électrodistribeur 5/2 bistable  
assistance pneumatique externe  
raccordement G1/8"  
5/2 double solenoid pilot  
with separate air supply  
G1/8"

Version Atex 2GD T6 : 521EEAS.ATEX

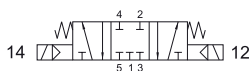


# GAMME STANDARD

## Électro distributeurs G1/8" | Solenoid actuated valves

### 5213C EE

Centre fermé  
*Closed center*



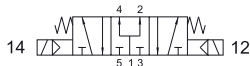
### 5213A EE

Centre ouvert  
*Open center*



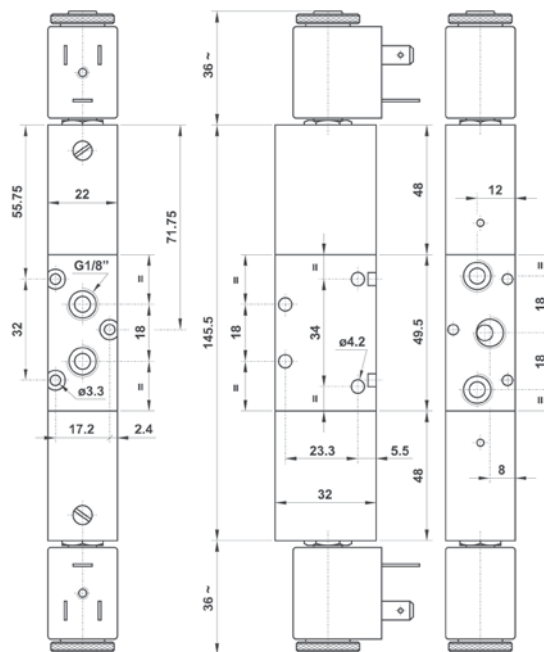
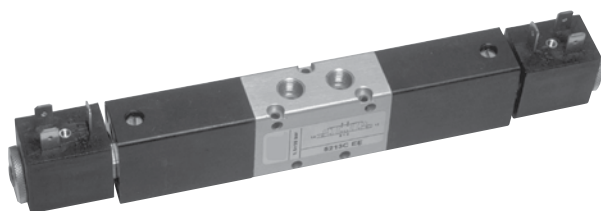
### 5213P EE

Centre en pression  
*Pressurized center*



Électro distributeur 5/3  
raccordement G1/8"  
5/3 double solenoid pilot  
G1/8"

Version Atex 2GD T6 : 5213\*EE.ATEXw



### 5213C EE AS

Centre fermé  
*Closed center*



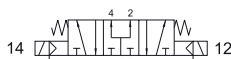
### 5213A EE AS

Centre ouvert  
*Open center*



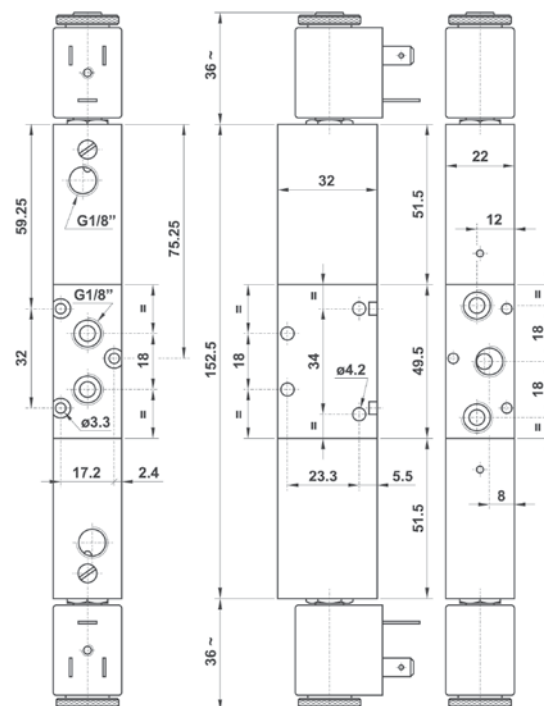
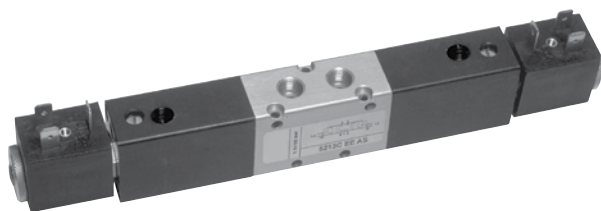
### 5213P EE AS

Centre en pression  
*Pressurized center*



Électro distributeur 5/3  
assistance pneumatique externe  
raccordement G1/8"  
5/3 double solenoid pilot  
with separate air supply  
G1/8"

Version Atex 2GD T6 : 5213\*EEAS.ATEX



# GAMME STANDARD

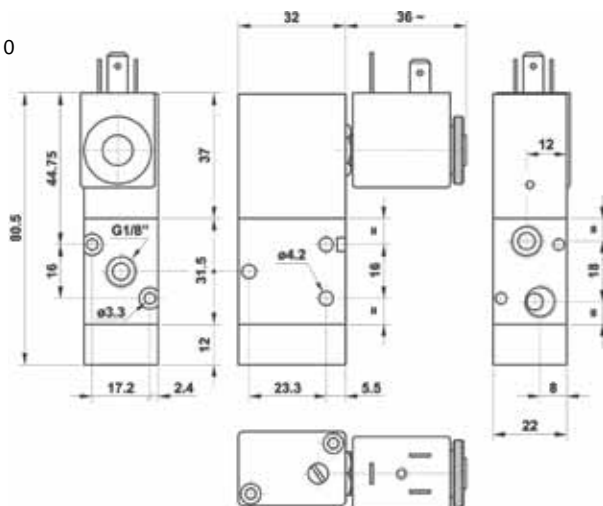
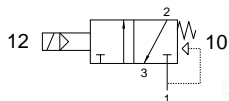
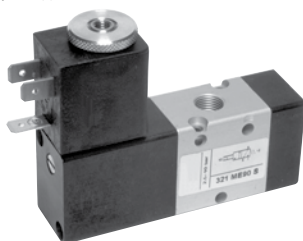
## Électro distributeurs G1/8" |

Solenoid actuated valves

### 321 ME90 S

Électro distributeur 3/2 NF monostable  
rappel à combinaison de ressort  
pilote à 90° sur champ  
raccordement G1/8"  
*3/2 NC 90° solenoid  
pilot on the narrow side  
for compact assembly - spring return  
G1/8"*

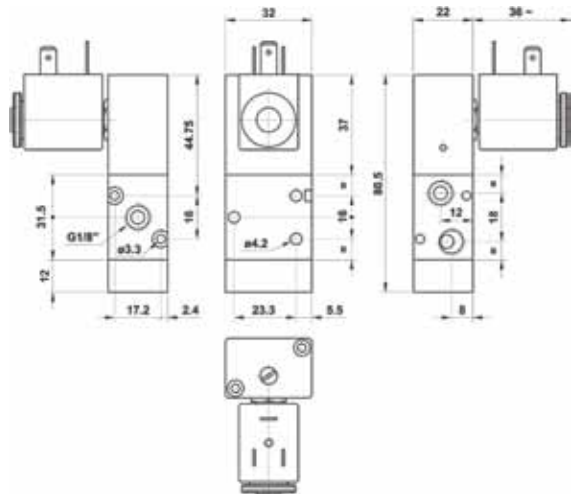
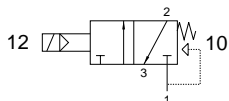
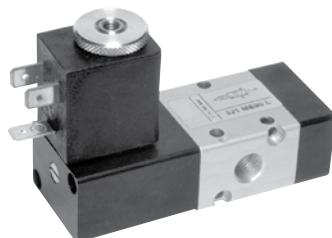
Version Atex 2GD T6 : 321ME90S.ATEX



### 321 ME90 L

Électro distributeur 3/2 NF monostable  
rappel à combinaison de ressort  
pilote à 90° sur face  
raccordement G1/8"  
*3/2 NC 90° solenoid pilot  
on the wide side - spring return  
G1/8"*

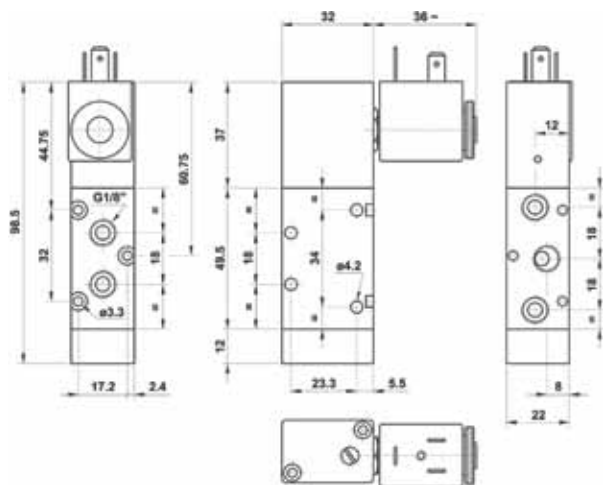
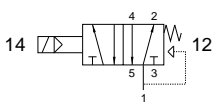
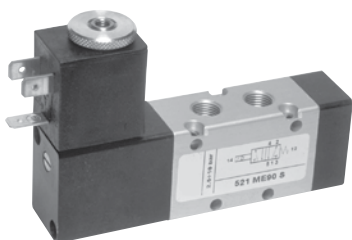
Version Atex 2GD T6 : 321ME90L.ATEX



### 521 ME90 S

Électro distributeur 5/2 monostable  
rappel à combinaison de ressort  
pilote à 90° sur champ  
raccordement G1/8"  
*5/2 90° solenoid pilot on the narrow  
side for compact assembly - spring return  
G1/8"*

Version Atex 2GD T6 : 521ME90S.ATEX







# GAMME STANDARD

## Électrodistribeurs G1/8" |

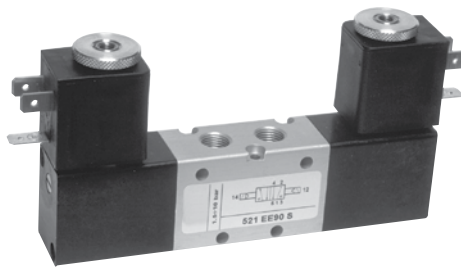
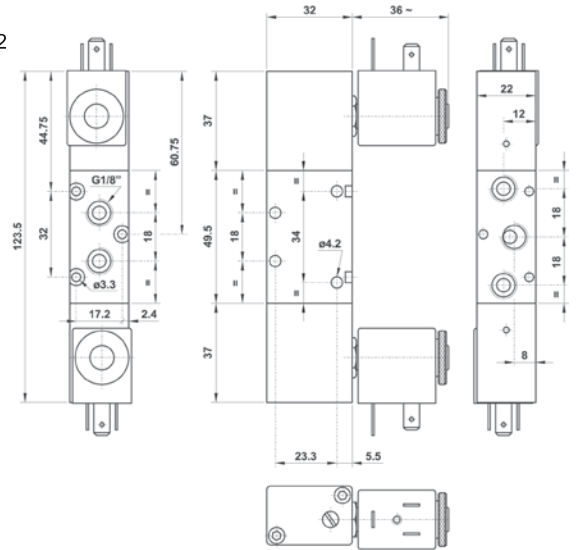
Solenoid actuated valves

### 521 EE90 S

Électrodistribeur 5/2 bistable  
pilotes à 90° sur champ  
raccordement G1/8"

*5/2 90° double solenoid pilot on the narrow  
side for compact assembly  
G1/8"*

Version Atex 2GD T6 : 521EE90S.ATEX

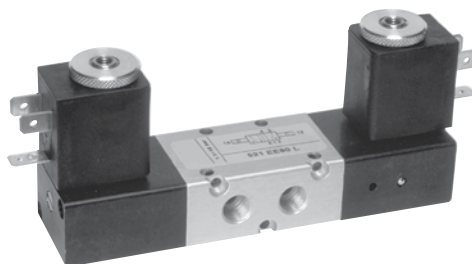
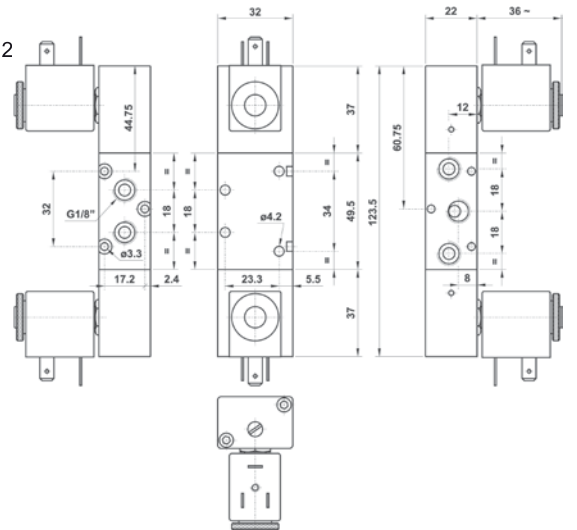
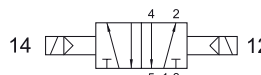


### 521 EE90 L

Électrodistribeur 5/2 bistable  
pilotes à 90° sur face  
raccordement G1/8"

*5/2 90° double solenoid  
pilot on the wide side  
G1/8"*

Version Atex 2GD T6 : 521EE90L.ATEX



# GAMME STANDARD

## Électro distributeurs G1/8" - pilote 15 mm |

Solenoid actuated valves

### 321 ME MIC xx

Électro distributeur 3/2 NF monostable  
**commande électrique 15 mm** (voir chapitre 5)  
 rappel à combinaison de ressort  
 raccordement G1/8"

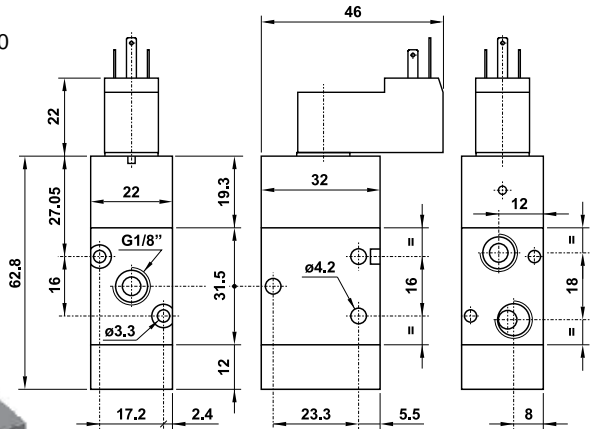
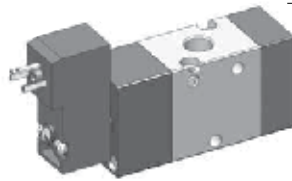
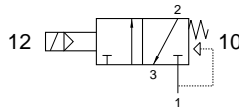
3/2 NC with 15 mm solenoid pilot (see chapter 5)  
 G1/8"

Version Atex 1/2GD T4 : 321MEMICx.ATEX

Afin d'obtenir la référence de votre produit,  
 remplacez la lettre "xx" par l'indication de la  
 tension selon les codes ci-dessous.

*In the part number replace the letters "xx"  
 with the reference of the solenoid tension*

24V DC.....01    24V 50/60Hz.....02



### 321 EE MIC xx

Électro distributeur 3/2 bistable  
**commande électrique 15 mm** (voir chapitre 5)  
 raccordement G1/8"

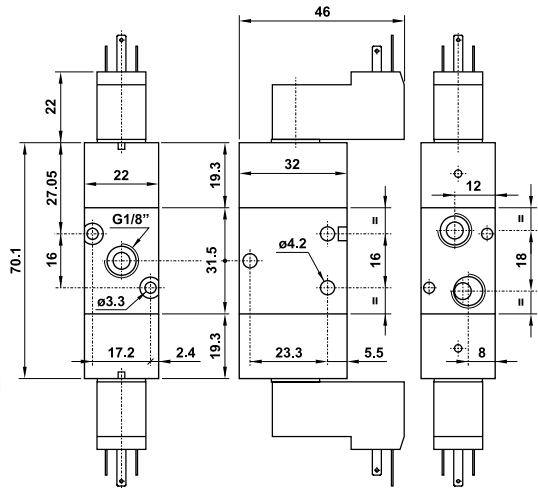
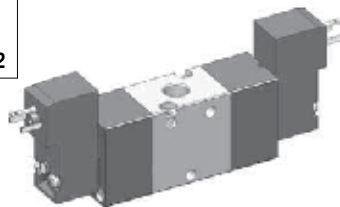
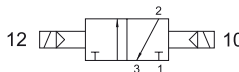
3/2 with double 15 mm solenoid pilot (see chapter 5)  
 G1/8"

Version Atex 1/2GD T4 : 321EEMICx.ATEX

Afin d'obtenir la référence de votre produit,  
 remplacez la lettre "xx" par l'indication de la  
 tension selon les codes ci-dessous.

*In the part number replace the letters "xx"  
 with the reference of the solenoid tension*

24V DC.....01    24V 50/60Hz.....02



### 521 ME MIC xx

Électro distributeur 5/2 monostable  
**commande électrique 15 mm** (voir chapitre 5)  
 rappel à combinaison de ressort  
 raccordement G1/8"

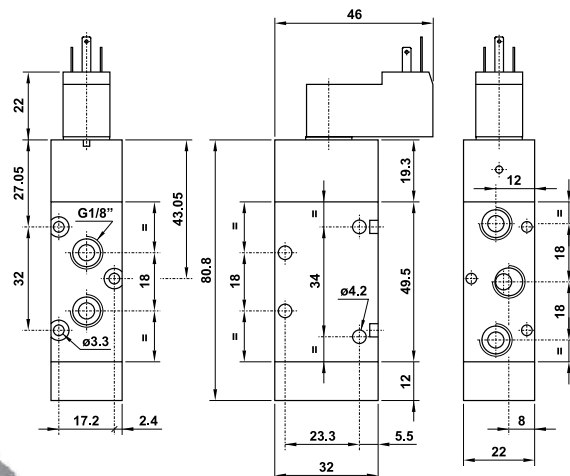
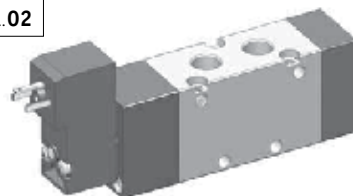
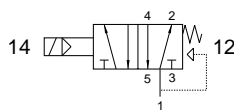
5/2 with 15 mm solenoid pilot (see chapter 5)  
 G1/8"

Version Atex 1/2GD T4 : 521MEMICx.ATEX

Afin d'obtenir la référence de votre produit,  
 remplacez la lettre "xx" par l'indication de la  
 tension selon les codes ci-dessous.

*In the part number replace the letters "xx"  
 with the reference of the solenoid tension*

24V DC.....01    24V 50/60Hz.....02





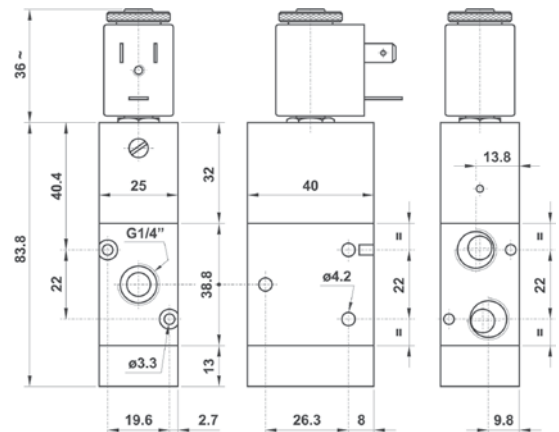
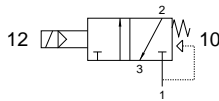
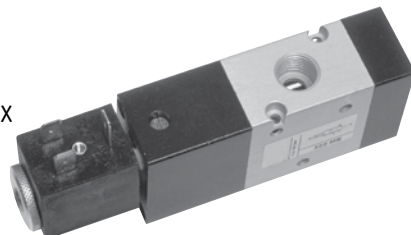
# GAMME STANDARD

## Électro distributeurs G1/4" | Solenoid actuated valves

### 322 ME

Électro distributeur 3/2 NF monostable  
rappel à combinaison de ressort  
raccordement G1/4"  
3/2 NC solenoid pilot  
spring return  
G1/4"

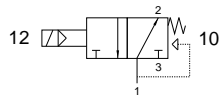
Version Atex 2GD T6 : 322ME.ATEX



### 322 MEA

Électro distributeur 3/2 NO monostable  
rappel à combinaison de ressort  
raccordement G1/4"  
3/2 NO solenoid pilot  
spring return  
G1/4"

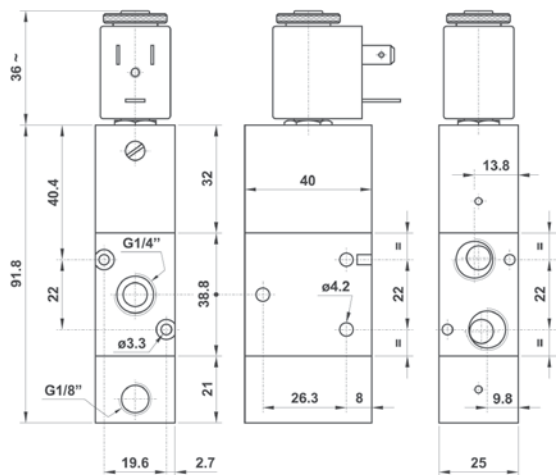
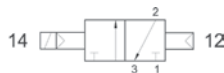
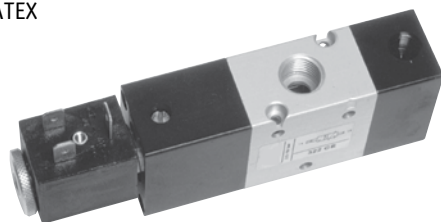
Version Atex 2GD T6 : 322MEA.ATEX



### 322 CE

Électro distributeur 3/2 bistable  
commande électrique  
retour par commande pneumatique  
raccordement G1/4"  
3/2 solenoid pilot  
separate pneumatically piloted return  
G1/4"

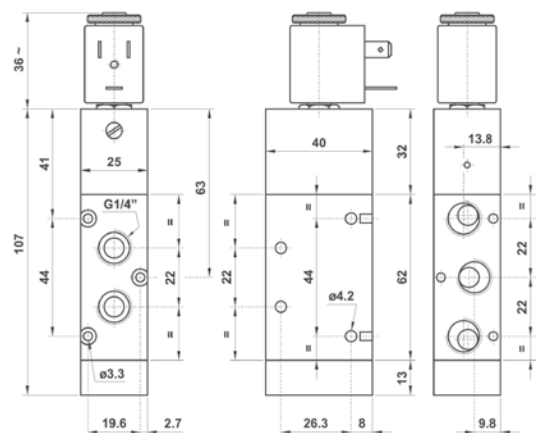
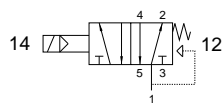
Version Atex 2GD T6 : 322CE.ATEX



### 522 ME

Électro distributeur 5/2 monostable  
rappel à combinaison de ressort  
raccordement G1/4"  
5/2 solenoid pilot  
spring return  
G1/4"

Version Atex 2GD T6 : 522ME.ATEX



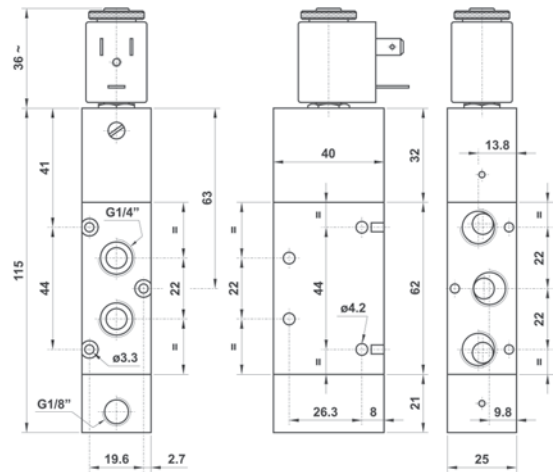
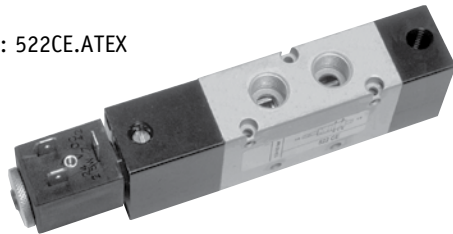
# GAMME STANDARD

## Électrodistribeurs G1/4" | Solenoid actuated valves

### 522 CE

Électrodistribeur 5/2 bistable  
commande électrique  
retour par commande pneumatique  
raccordement G1/4"  
*5/2 solenoid pilot  
separate pneumatically piloted return  
G1/4"*

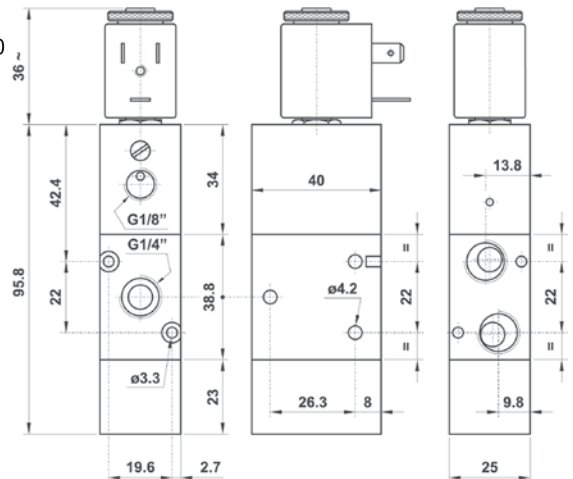
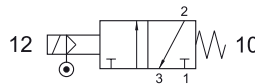
Version Atex 2GD T6 : 522CE.ATEX



### 322 ME AS

Électrodistribeur 3/2 NF monostable  
à assistance pneumatique externe  
rappel ressort mécanique  
raccordement G1/4"  
*3/2 NO solenoid pilot with separate air supply  
spring return  
G1/4"*

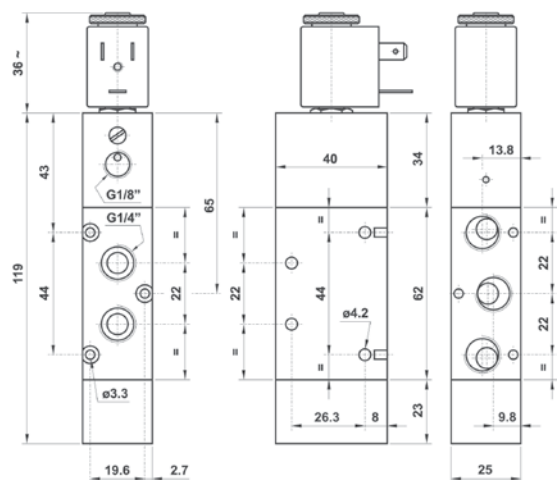
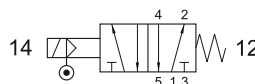
Version Atex 2GD T6 : 322MEAS.ATEX



### 522 ME AS

Électrodistribeur 5/2 monostable  
assistance pneumatique externe  
rappel ressort mécanique  
raccordement G1/4"  
*5/2 solenoid pilot with separate air supply  
spring return  
G1/4"*

Version Atex 2GD T6 : 522MEAS.ATEX



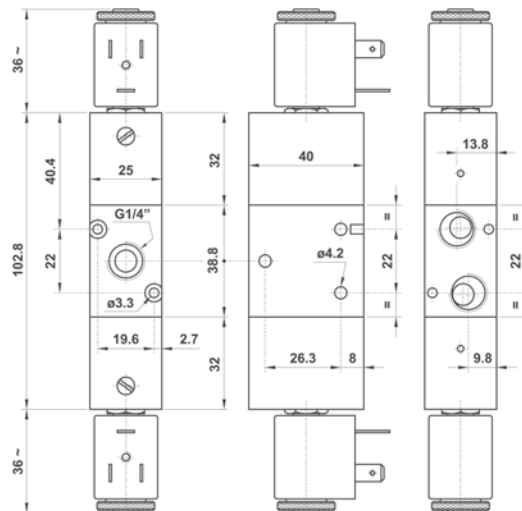
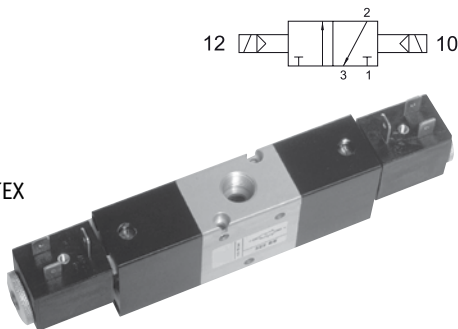
# GAMME STANDARD

## Électro distributeurs G1/4" | Solenoid actuated valves

### 322 EE

Électro distributeur 3/2 bistable  
raccordement G1/4"  
3/2 double solenoid pilot  
G1/4"

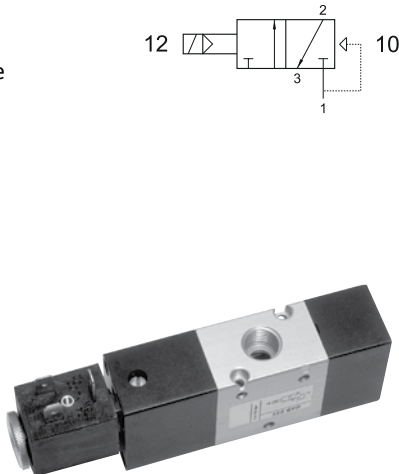
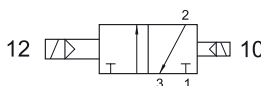
Version Atex 2GD T6 : 322EE.ATEX



### 322 EED

Électro distributeur 3/2 bistable différentiel  
raccordement G1/4"  
3/2 double solenoid pilot  
with differential  
G1/4"

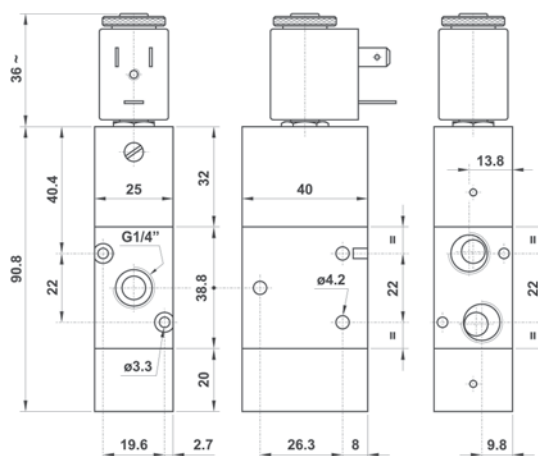
Version Atex 2GD T6 : 322EED.ATEX



### 322 EFP

Électro distributeur 3/2 NF monostable  
rappel ressort pneumatique  
raccordement G1/4"  
3/2 NC solenoid pilot pneumatic  
spring return  
G1/4"

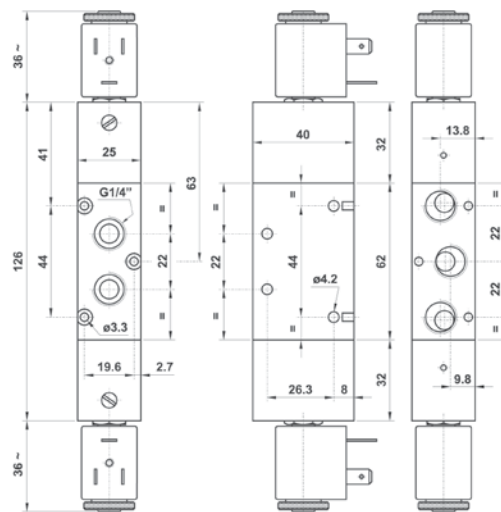
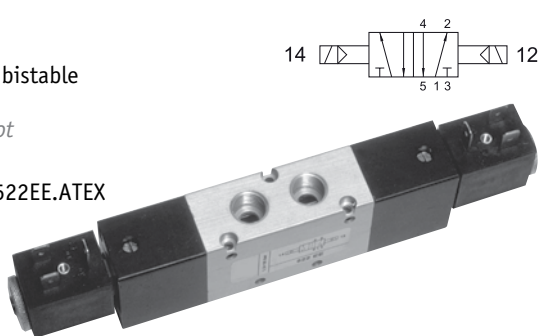
Version Atex 2GD T6 : 322EFP.ATEX



### 522 EE

Électro distributeur 5/2 bistable  
raccordement G1/4"  
5/2 double solenoid pilot  
G1/4"

Version Atex 2GD T6 : 522EE.ATEX



### 522 EED

Électro distributeur 5/2 bistable différentiel  
raccordement G1/4"  
5/2 double solenoid pilot  
with differential  
G1/4"

Version Atex 2GD T6 : 522EED.ATEX



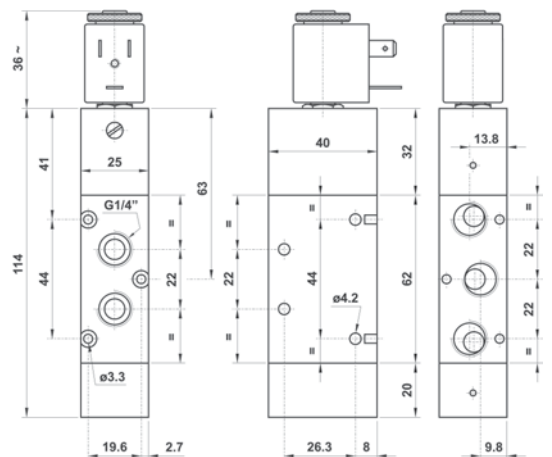
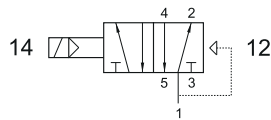
# GAMME STANDARD

## Électrodistribeurs G1/4" | Solenoid actuated valves

### 522 EFP

Électrodistribeur 5/2 monostable  
rappel ressort pneumatique  
raccordement G1/4"  
5/2 solenoid pilot  
pneumatic spring return  
G1/4"

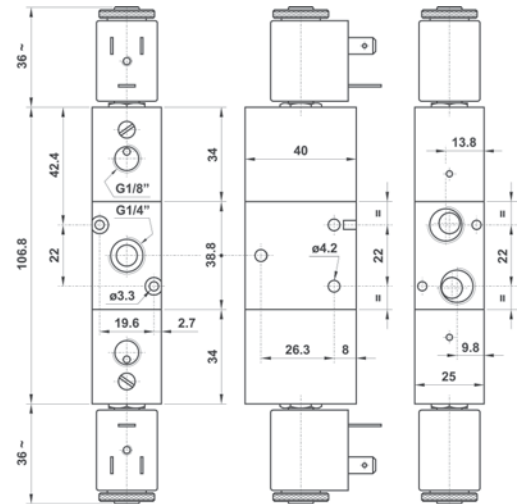
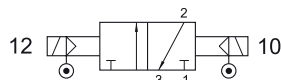
Version Atex 2GD T6 : 522EFP.ATEX



### 322 EE AS

Électrodistribeur 3/2 bistable  
assistance pneumatique externe  
raccordement G1/4"  
3/2 double solenoid pilot  
with separate air supply  
G1/4"

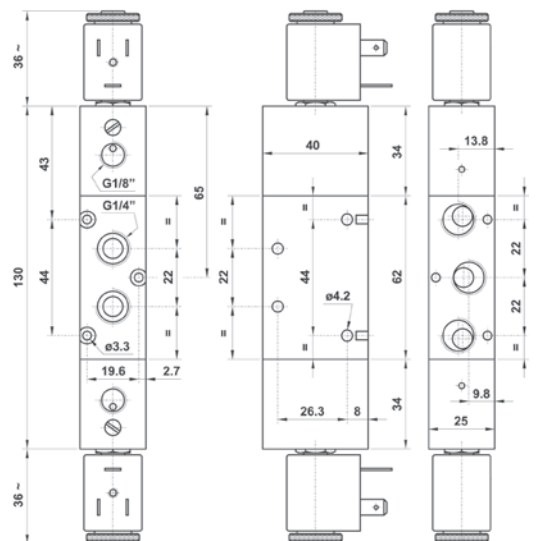
Version Atex 2GD T6 : 322EEAS.ATEX



### 522 EE AS

Électrodistribeur 5/2 bistable  
assistance pneumatique externe  
raccordement G1/4"  
5/2 double solenoid pilot  
with separate air supply  
G1/4"

Version Atex 2GD T6 : 522EEAS.ATEX

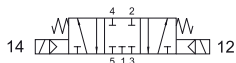


# GAMME STANDARD

## Électro distributeurs G1/4" | Solenoid actuated valves

### 5223C EE

Centre fermé  
*Closed center*



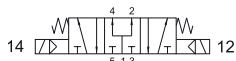
### 5223A EE

Centre ouvert  
*Open center*



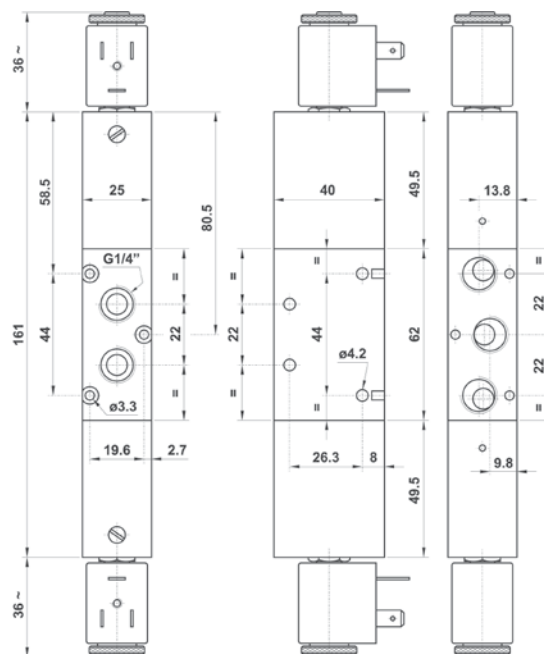
### 5223P EE

Centre en pression  
*Pressurized center*



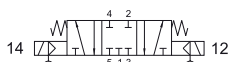
Électro distributeur 5/3  
bistable  
raccordement G1/4"  
5/3 double solenoid pilot  
G1/4"

Version Atex 2GD T6 : 5223\*EE.ATEX



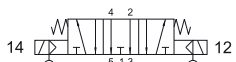
### 5223C EE AS

Centre fermé  
*Closed center*



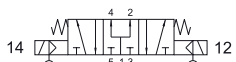
### 5223A EE AS

Centre ouvert  
*Open center*



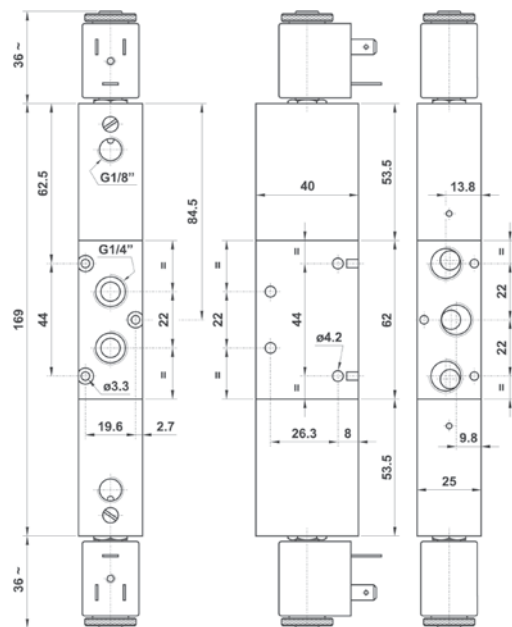
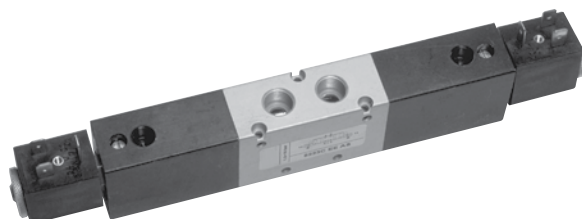
### 5223P EE AS

Centre en pression  
*Pressurized center*



Électro distributeur 5/3  
bistable  
assistance pneumatique externe  
raccordement G1/4"  
5/3 double solenoid pilot  
with separate air supply  
G1/4"

Version Atex 2GD T6 : 5223\*EEAS.ATEX





# GAMME STANDARD

## Électrodistribeurs G1/4" - pilote 15 mm |

Solenoid actuated valves

### 322 ME MIC xx

Électrodistribeur 3/2 NF

**commande électrique 15 mm** (voir chapitre 5)

rappel à combinaison de ressort

raccordement G1/4"

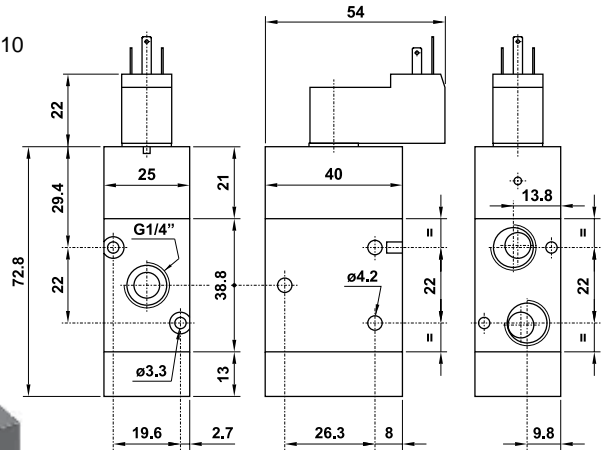
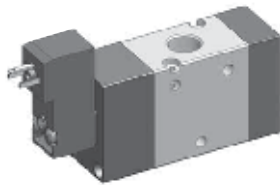
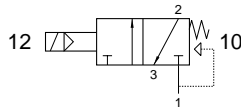
3/2 NC with 15 mm solenoid pilot (see chapter 5) - G1/4"

Version Atex 1/2GD T4 : 322MEMICx.ATEX

Afin d'obtenir la référence de votre produit, remplacez la lettre "xx" par l'indication de la tension selon les codes ci-dessous.

*In the part number replace the letters "xx" with the reference of the solenoid tension*

24V DC.....01    24V 50/60Hz.....02



### 322 EE MIC xx

Électrodistribeur 3/2 bistable

**commande électrique 15 mm** (voir chapitre 5)

raccordement G1/4"

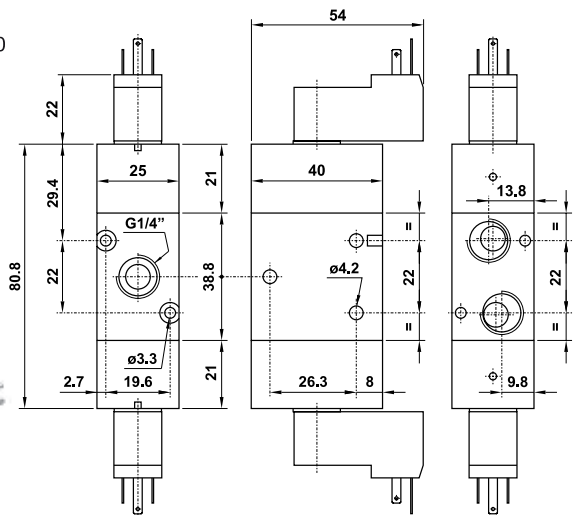
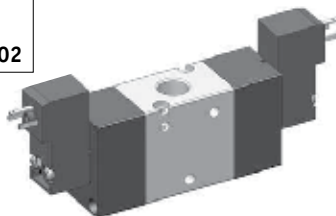
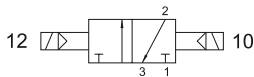
3/2 with double 15 mm solenoid pilot (see chapter 5) G1/4"

Version Atex 1/2GD T4 : 322EEMICx.ATEX

Afin d'obtenir la référence de votre produit, remplacez la lettre "xx" par l'indication de la tension selon les codes ci-dessous.

*In the part number replace the letters "xx" with the reference of the solenoid tension*

24V DC.....01    24V 50/60Hz.....02



### 522 ME MIC xx

Électrodistribeur 5/2 monostable

**commande électrique 15 mm** (voir chapitre 5)

rappel à combinaison de ressort

raccordement G1/4"

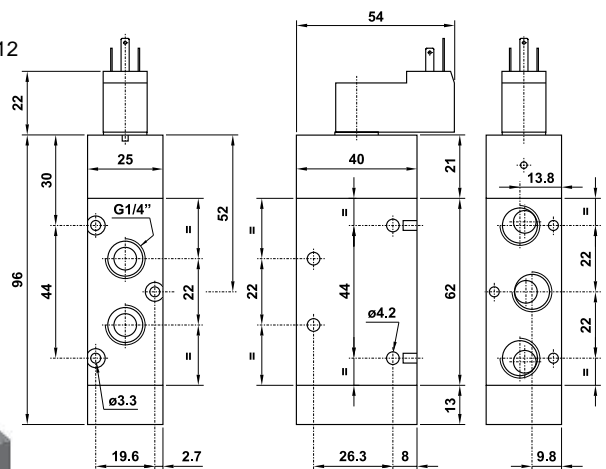
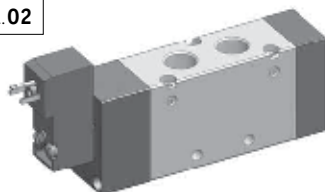
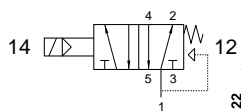
3/2 with double 15 mm solenoid pilot (see chapter 5) - G1/4"

Version Atex 1/2GD T4 : 522MEMICx.ATEX

Afin d'obtenir la référence de votre produit, remplacez la lettre "xx" par l'indication de la tension selon les codes ci-dessous.

*In the part number replace the letters "xx" with the reference of the solenoid tension*

24V DC.....01    24V 50/60Hz.....02



# GAMME STANDARD

## Électro distributeurs G1/4" - pilote 15 mm |

Solenoid actuated valves

### 522 EE MIC xx

Électro distributeur 5/2 bistable

**commande électrique 15 mm** (voir chapitre 5)  
raccordement G1/4"

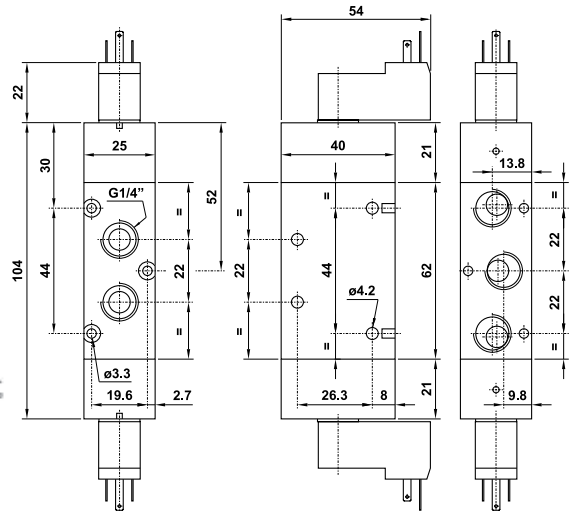
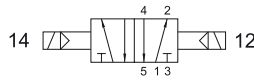
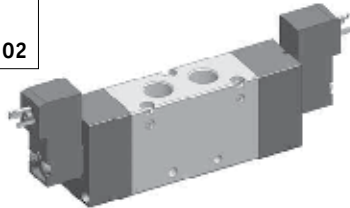
5/2 with double 15 mm solenoid pilot (see chapter 5)  
G1/4"

Version Atex 1/2GD T4 : 522EEMICx.ATEX

Afin d'obtenir la référence de votre produit, remplacez la lettre "xx" par l'indication de la tension selon les codes ci-dessous.

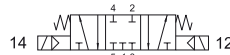
In the part number replace the letters "xx" with the reference of the solenoid tension

24V DC.....01    24V 50/60Hz.....02



### 5223C EE MIC xx

Centre fermé  
Closed center



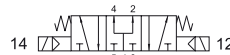
### 5223A EE MIC xx

Centre ouvert  
Open center



### 5223P EE MIC xx

Centre en pression  
Pressurized center



Électro distributeur 5/3

**commande électrique 15 mm** (voir chapitre 5)  
raccordement G1/4"

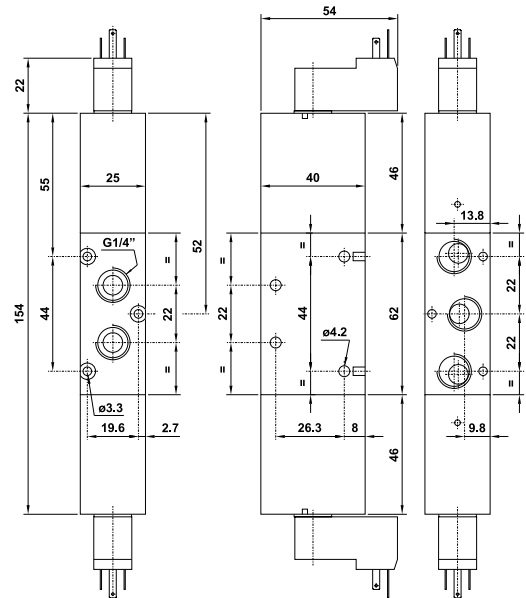
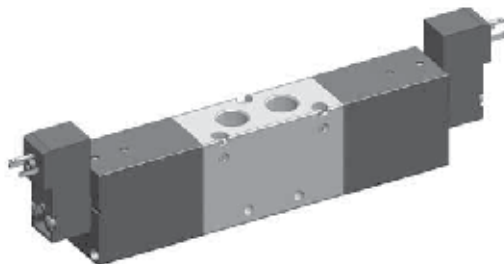
5/3 with double 15 mm solenoid pilot (see chapter 5)  
G1/4"

Version Atex 1/2GD T4 : 5223\*EEMICx.ATEX

Afin d'obtenir la référence de votre produit, remplacez la lettre "xx" par l'indication de la tension selon les codes ci-dessous.

In the part number replace the letters "xx" with the reference of the solenoid tension

24V DC.....01    24V 50/60Hz.....02

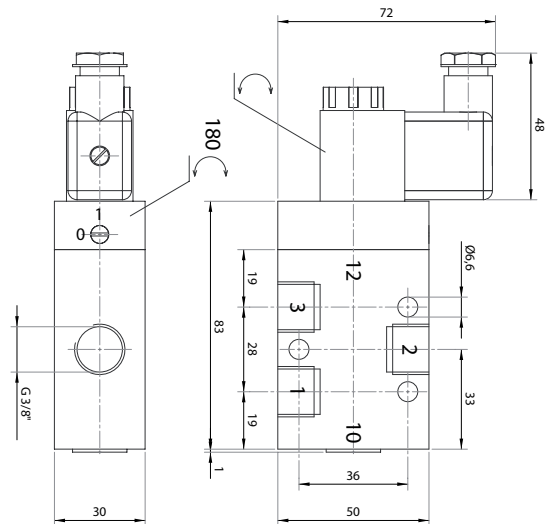
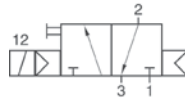
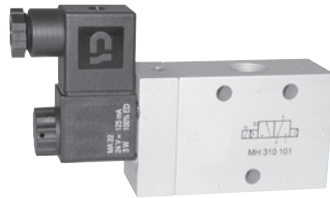


# GAMME STANDARD

## Électrodistribeurs G3/8" | Solenoid actuated valves

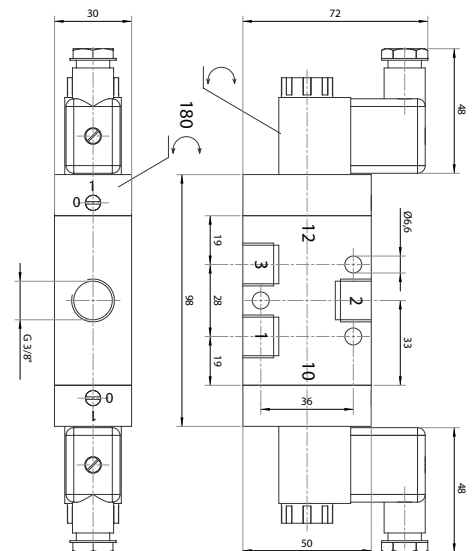
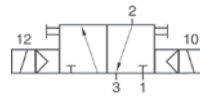
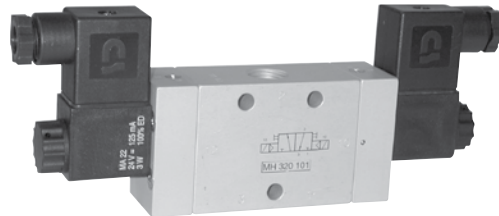
### MH 310 101

Électrodistribeur 3/2 NF monostable  
 rappel ressort pneumatique  
 raccordement G3/8"  
 3/2 NC solenoid pilot  
 air spring  
 G3/8"



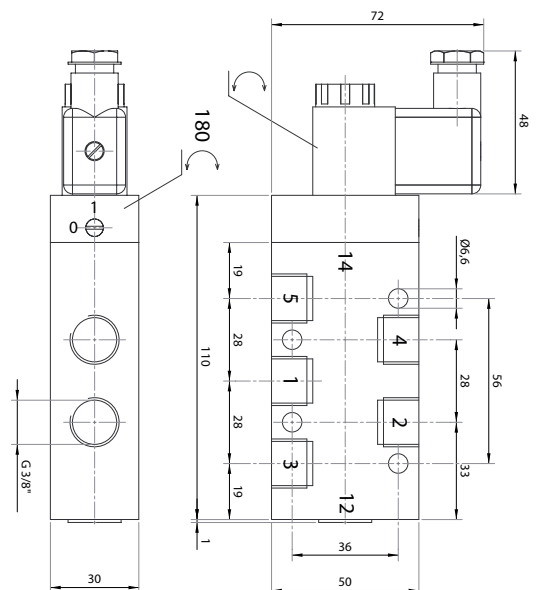
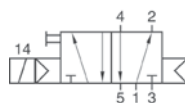
### MH 320 101

Électrodistribeur 3/2 bistable  
 raccordement G3/8"  
 3/2 solenoid pilot  
 G3/8"



### MH 510 101

Électrodistribeur 5/2 monostable  
 rappel ressort pneumatique  
 raccordement G3/8"  
 5/2 solenoid pilot  
 air spring  
 G3/8"

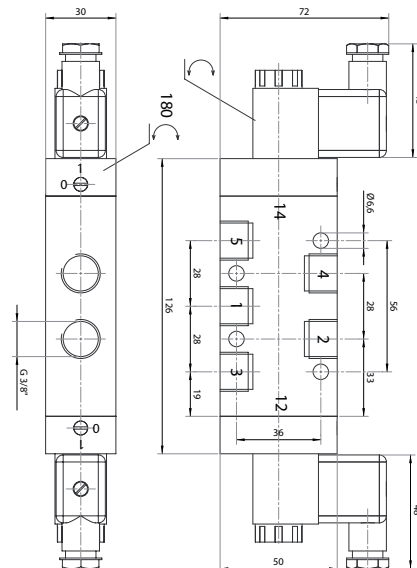
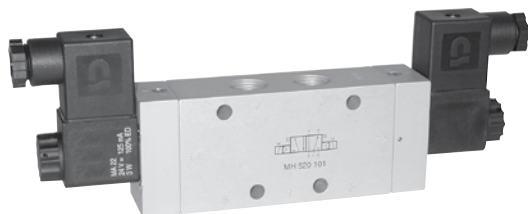
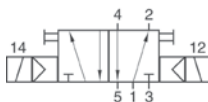


# GAMME STANDARD

## Électro distributeurs G3/8" | Solenoid actuated valves

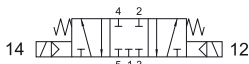
### MH 520 101

Électro distributeur 5/2 bistable  
raccordement G3/8"  
5/2 solenoid pilot  
G3/8"



### MH 531 101

Centre fermé  
*Closed center*



### MH 522 101

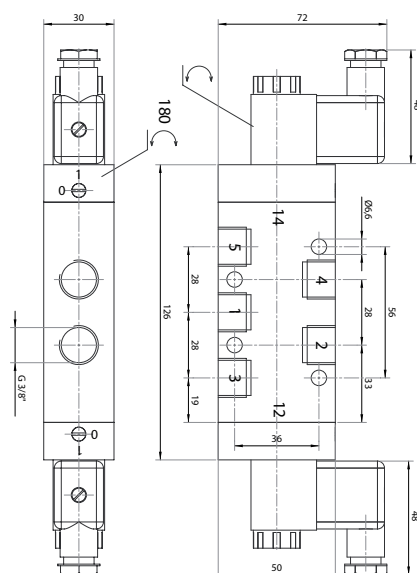
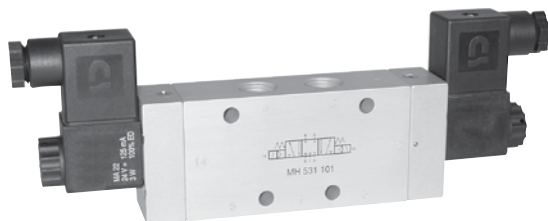
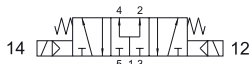
Centre ouvert  
*Open center*



### MH 533 101

Électro distributeur 5/3  
raccordement G3/8"  
5/3 solenoid pilot  
G3/8"

Centre en pression  
*Pressurized center*



# GAMME STANDARD

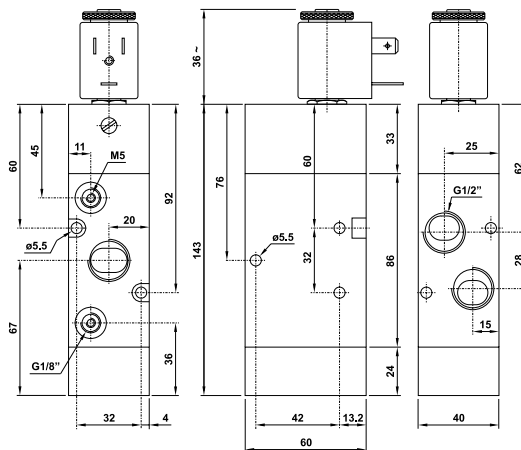
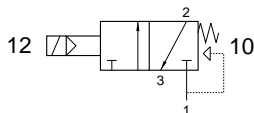
## Électrodistribeurs G1/2" |

Solenoid actuated valves

### 324 ME

Électrodistribeur 3/2 NF monostable  
rappel à combinaison de ressort  
raccordement G1/2"  
3/2 NC solenoid pilot  
spring return  
G1/2"

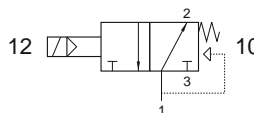
Version Atex 2GD T6 : 324ME.ATEX



### 324 MEA

Électrodistribeur 3/2 NO monostable  
rappel à combinaison de ressort  
raccordement G1/2"  
3/2 NO solenoid pilot  
spring return  
G1/2"

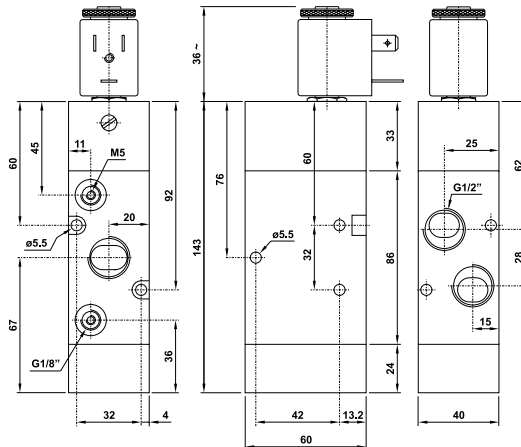
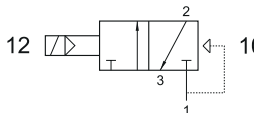
Version Atex 2GD T6 : 324MEA.ATEX



### 324 EFP

Électrodistribeur 3/2 NF monostable  
rappel ressort pneumatique  
raccordement G1/2"  
3/2 NC solenoid pilot  
pneumatic spring return  
G1/2"

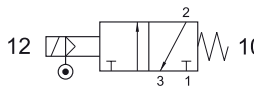
Version Atex 2GD T6 : 324EFP.ATEX



### 324 ME AS

Électrodistribeur 3/2 NF monostable  
rappel ressort mécanique  
assistance pneumatique externe  
raccordement G1/2"  
3/2 solenoid pilot with separate air supply  
spring return  
G1/2"

Version Atex 2GD T6 : 324MEAS.ATEX





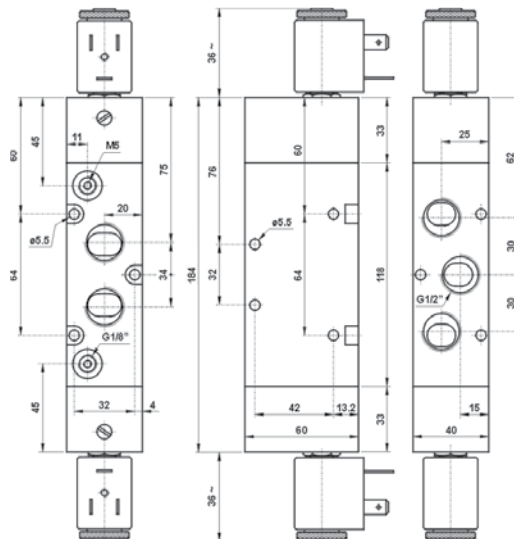
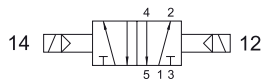
# GAMME STANDARD

## Électrodistribeurs G1/2" | Solenoid actuated valves

### 524 EE

Électrodistribeur 5/2 bistable  
raccordement G1/2"  
5/2 double solenoid pilot  
G1/2"

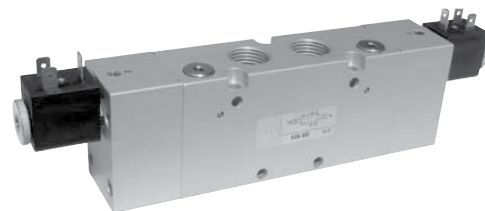
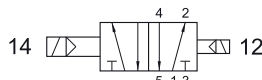
Version Atex 2GD T6 : 524EE.ATEX



### 524 EED

Électrodistribeur 5/2 bistable différentiel  
raccordement G1/2"  
5/2 double solenoid pilot  
with differential  
G1/2"

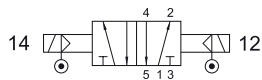
Version Atex 2GD T6 : 524EED.ATEX



### 524 EE AS

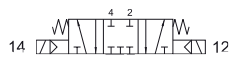
Électrodistribeur 5/2 bistable  
assistance pneumatique externe  
raccordement G1/2"  
5/2 double solenoid pilot  
with separate air supply  
G1/2"

Version Atex 2GD T6 : 524EEAS.ATEX



### 5243C EE

Centre fermé  
Closed center



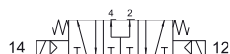
### 5243A EE

Centre ouvert  
Open center



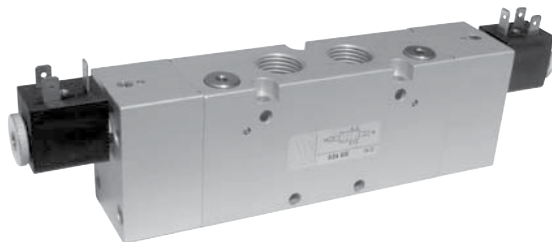
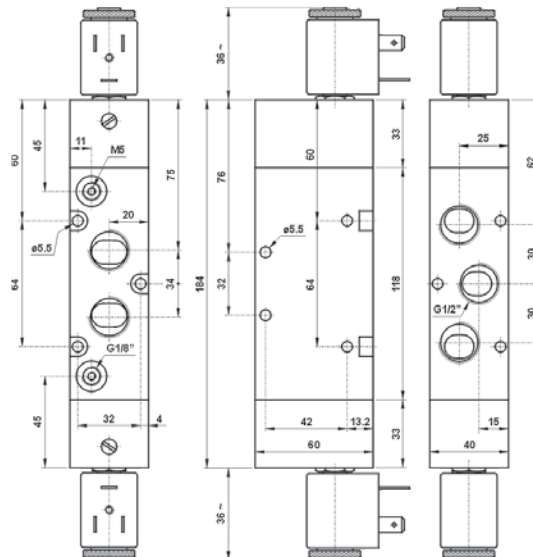
### 5243P EE

Centre en pression  
Pressurized center



Électrodistribeur 5/3  
raccordement G1/2"  
5/3 double solenoid pilot  
G1/2"

Version Atex 2GD T6 : 5243\*EE.ATEX



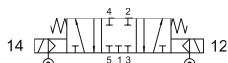
# GAMME STANDARD

## Électro distributeurs G1/2"

Solenoid actuated valves

### 5243C EE AS

Centre fermé  
*Closed center*



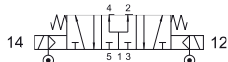
### 5243A EE AS

Centre ouvert  
*Open center*



### 5243P EE AS

Centre en pression  
*Pressurized center*



Électro distributeur 5/3  
assistance pneumatique externe

raccordement G1/2"

5/3 double solenoid pilot  
with separate air supply  
G1/2"

Version Atex 2GD T6 : 5243\*EEAS.ATEX

