

Duct Mounting Set C2-Z2 for SC2 and MC2 Sensors

The duct mounting set consists of a sampling tube
with hose and adapter for SC2 and MC2 sensors.

APPLICATION

Duct mounting set for sampling from air ducts.



FEATURES

- Easy to use
- Perfect coverage of the sensor head
- Double pipe can be cut to length for adaptation to the duct diameter

SPECIFICATIONS

Sampling set

Gas sampling	Via sampling tube / connecting hose
Flow rate	Min. 5000 m/h (3.1 mph), max. 20,000 m/h (12.4 mph)
Air duct diameter	Min. 0.1 m (3.94 in.), max. 1.0 m (39.37 in.)
Length of sampling tube	250 mm (9.84 in.), adaptable to the duct diameter by cutting to length: 192 mm (7.56 in.), 133 mm (5.24 in.) or 77 mm (3.03 in.)*
Hose length	2 x 1000 mm (39.37 in.)
Assembly	- Arrow at the sampling set in flow direction - Always install in the centre of the duct - Keep a minimum distance of at least 1000 mm to duct bends etc.

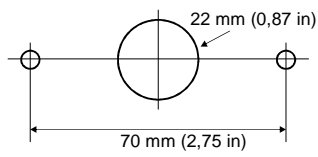
* See drawing Sampling Tube

ORDERING INFORMATION

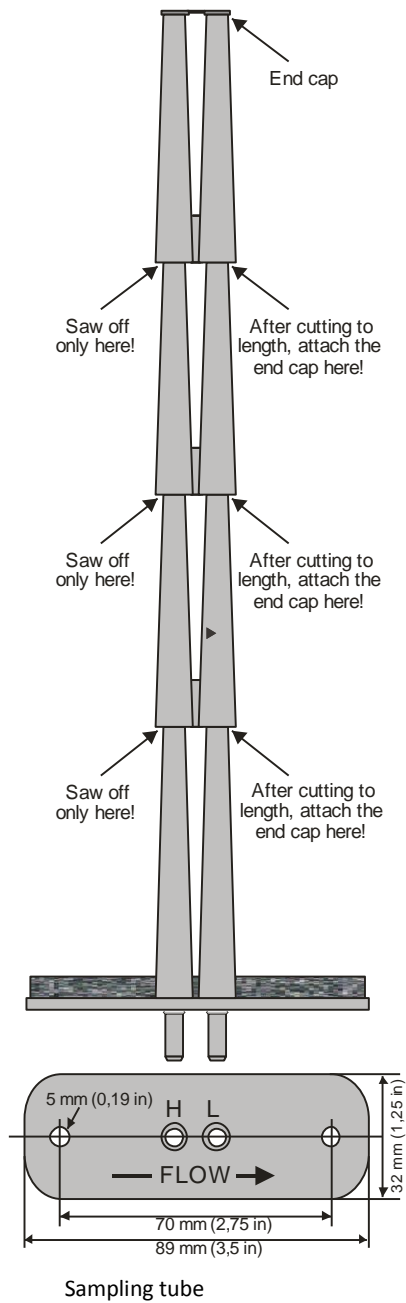
C2-Z2 Air duct mounting set for MC2 and SC2 sensors



Duct Mounting Set C2-Z2 for SC2 and MC2 Sensors



Bore hole on the duct for sampling tube



Calibration Adapter C2-Z4 for SC2 and MC2 Sensors

Calibration adapter for comfortable gas supply to sensors of the SC2 and MC2 series.

APPLICATION

The PolyGard®2 calibration adapter is used for the targeted supply of zero and test gases to the sensor head.

FEATURES

- Suitable for all gases
- Easy to use
- Perfect coverage of the sensor head



SPECIFICATIONS

Cap

Material	PE-LD
Dimensions (D x G)	25 mm x 20 mm (0.98 in. x 0.79 in.) see fig. 1

Hose

Material	PVC-P polyvinyl chloride
Temperature range	-20 °C to +60 °C (-4 °F to 140 °F)
Length	1 m (39.37 in.)

ORDERING INFORMATION

C2-Z4 Calibration adapter for MC2 and SC2

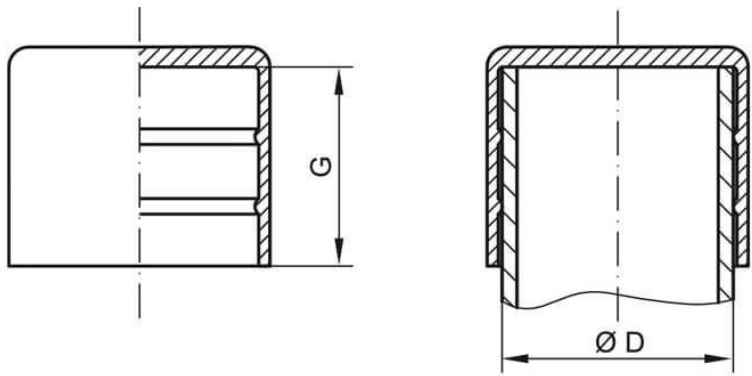


Fig. 1 Dimensions of the cap

SplashGuard C2-Z5 for SC2 and MC2 Sensors

Cap for protecting the SC2 or MC2 sensor against splash water.

The cap is placed over the sensor head and secured by means of a detachable zip tie. It protects the sensor against rain and splash water coming from all directions.

The calibration can be carried out when the protective cap is mounted by using the suitable calibration adapter C2-Z4A. You have to recalibrate the sensor with the appropriate adapter when the splashguard is mounted, otherwise it will result in deviations in the behaviour of the sensor.

APPLICATION

The splash guard is used in gas warning systems, which are mounted outside unprotected from the weather. It can also be used to protect the sensor during cleaning work.

FEATURES

- Protection against rain, splash water and other weather conditions
- Easy installation
- Assembly and disassembly possible at any time due to detachable zip tie
- Calibration possible with suitable calibration adapter

SPECIFICATIONS

Red cap

Material	LDPE + PC
Dimensions	25 x 37 mm (D x H)
Protection class	IP 66

ORDERING INFORMATION

C2-Z5 SplashGuard for MC2 and SC2 sensors



Calibration Adapter C2-Z4A for MC2 & SC2 Sensors Covered with a Splash Guard

Calibration adapter for comfortable gas supply to sensors of the SC2 and MC2 series covered with a splash guard cap.

APPLICATION

The PolyGard®2 calibration adapter is used for the targeted supply of zero and test gases to the sensor head covered with a splash guard.

FEATURES

- Suitable for all gases
- Easy to use
- Perfect coverage of the sensor head



SPECIFICATIONS

Cap

Material	TPE (free of plasticizers)
Dimensions (D x G)	27 mm x 20 mm (1.06 in. x 0.79 in.) see fig. 2

Hose

Material	PVC-P polyvinyl chloride
Temperature range	-20 °C to +60 °C (-4 °F to 140 °F)
Length	1 m (39.37 in.)

ORDERING INFORMATION

C2-Z4A Calibration adapter for splash guard

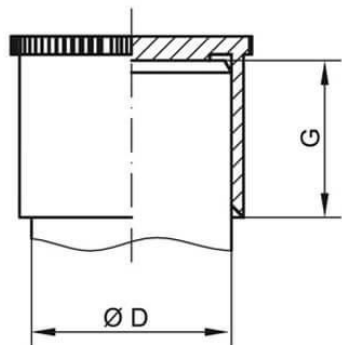


Fig. 2 Dimensions of the cap



Document non contractuel - Nous nous réservons la possibilité de faire évoluer les caractéristiques de nos produits sans préavis

Siège social Lyon / 9 rue de Catalogne - Parc des Pivollas - 69153 Décines Cedex / +33 (0)4 72 15 88 70 / contact@c2ai.com

Agence Île de France
paris@c2ai.com

Agence Est
mulhouse@c2ai.com

Agence Sud-Ouest
sudouest@c2ai.com

Service Export
export@c2ai.com



contact@c2ai.com

www.c2ai.com