

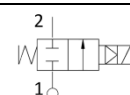


- Coil size 42mm - 83mm
- 2/2 way NC
- Servo actuated
- Minimal working pressure 0 bar
- ED 100%

Données techniques

Body material	Brass			
Seal material	NBR – EPDM – EPDM KTW – FPM			
Tube material	Stainless steel			
Working fluids	Water, air, light oils			
Electrical connect.	6,3 x 0,8 fast-on terminal			
Insulation class	H			
Coil type	B12 (42mm)		B60 (83mm)	
220-230VAC 50-60Hz Approvals: CE; VDE	Power (VA)	18	Power (VA)	140
100-120VAC 60Hz Approvals: CE; UL				
12-24 VDC Approvals: CE	Power (W)	21	Power (W)	43
Max temperature	Fluids			Ambient
	NBR	EPDM	EPDM-KTW	FPM
	90°C	130°C	130 °C	150°C
	80 °C			










Performance



Pipes IN - OUT	Orifice size mm	Flow m3/h	MOPD (bar) *		Code
			AC	DC	
G 3/8	12	2,20	5	5	8413
G 1/2	12	2,20	5	5	8414
3/8 NPT	12	2,20	5	5	8423
1/2 NPT	12	2,20	5	5	8424
G 3/4	20	5,50	4	2	8415
G 1	25	7,50	4	2	8416
G 1 ¼	36	17,50	4	2	8417
G 1 ½	39	19,00	4	2	8418
G 2	51	32,40	4	2	8419

*: over this pressure the valve is not able to open

Connexion hydraulique

<p>G 3/8 Series 8413</p> 	<p>G 1/2 Series 8414</p> 	<p>3/8 NPT Series 8423</p> 	<p>1/2 NPT Series 8424</p> 	<p>G 3/4 Series 8415</p> 
<p>G 1 Series 8416</p> 	<p>G 1 ¼ Series 8417</p> 	<p>G 1 ½ Series 8418</p> 	<p>G 2 Series 8419</p> 	

Availability coil orientation

