

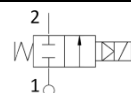


- Coil size 42mm
- 2/2 way NC
- Pilot operated
- Multi purpose
- ED 100%

Données techniques

Min differential working pressure	0,1 bar		
Body material	Brass		
Seal material	NBR – FPM		
Tube material	Brass		
Working fluids	Air, water, inert gas, light oils		
Electrical connect.	6,3 x 0,8 fast-on terminal		
Insulation class	H		
220-230VAC 50-60Hz Approvals: CE; VDE	Power (VA)	22	
100-120VAC 60Hz Approvals: CE; UL			
12-24 VDC Approvals: CE	Power (W)	21	
Max temperature	Fluids		Ambient
	NBR	FPM	+80 °C
	90 °C	150 °C	

Performance



Pipes IN - OUT	Orifice Ø mm	Flow m3/h	MOPD (bar) *		Code
			AC	DC	
1/4 NPT	11	1,40	20	20	8302
3/8 NPT	11	1,50	20	20	8303
1/2 NPT	11	1,60	20	20	8304
G 1/4	11	1,40	20	20	8322
G 3/8	11	1,50	20	20	8323
G 1/2	11	1,60	20	20	8324

*: over this pressure the valve is not able to open

Connexion hydraulique

<p>1/4 NPT Series 8302</p> 	<p>3/8 NPT Series 8303</p> 	<p>1/2 NPT Series 8304</p> 
<p>G 1/4</p> 	<p>G 3/8</p> 	<p>G 1/2</p> 

Availability coil orientation

